

연세대학교 상경대학

**경제연구소**

Economic Research Institute

Yonsei University



서울시 서대문구 연세로 50

50 Yonsei-ro, Seodaemun-gu, Seoul, Korea

TEL: (+82-2) 2123-4065 FAX: (+82-2) 364-9149

E-mail: [yeri4065@yonsei.ac.kr](mailto:yeri4065@yonsei.ac.kr)

<http://yeri.yonsei.ac.kr/new>

# **International Fiscal-financial Spillovers: The Effect of Fiscal Shocks on Cross-border Bank Lending**

**Sangyup Choi**

*Yonsei Univ*

**Davide Furceri**

*IMF*

**Chansik Yoon**

*Princeton University*

October 2020

2020RWP-179

**Economic Research Institute**

**Yonsei University**

# International Fiscal-financial Spillovers: The Effect of Fiscal Shocks on Cross-border Bank Lending\*

October 2020

Sangyup Choi<sup>†</sup>  
Yonsei University

Davide Furceri<sup>‡</sup>  
IMF

Chansik Yoon<sup>◇</sup>  
Princeton University

## Abstract

This paper sheds new light on the degree of international fiscal-financial spillovers by investigating the effect of domestic fiscal policies on cross-border bank lending. By estimating the dynamic response of U.S. cross-border bank lending towards 45 recipient countries to exogenous domestic fiscal shocks (both measured by spending and revenue) between 1990Q1 and 2012Q4, we find that expansionary domestic fiscal shocks lead to a statistically significant increase in cross-border bank lending and the size of the effect is comparable to an exogenous decline in the federal funds rate by about 25bp (50bp) for spending (revenue) shocks. The fiscal-financial spillovers we find are independent of changes in monetary policy or financial conditions measured by the VIX. The effects also depend on the sign of the fiscal shocks and the underlying economic conditions of a source country. While capital controls seem to play some moderating role, we do not find systematic and statistically significant differences in the spillover effects across recipient countries, depending on their exchange rate regime. The extension of the analysis to fiscal shocks for a panel of 16 small open economies largely confirms the U.S. economy's findings.

**Keywords:** Fiscal-financial spillovers; Cross-border banking flows; Local projections; Nonlinear effects; Trilemma.

**JEL codes:** E62; F21; F32; F42.

---

\* Comments from the editor George Tavlas and two anonymous referees helped to greatly improve this paper. We are also thankful to Jaebin Ahn, Şebnem Kalemli-Özcan, Jinil Kim, Soyoung Kim, Jong-Wha Lee, Nicola Pavoni, Matthew Shapiro, Kwanho Shin, and the seminar participants at Korean Macroeconomics Research Group, Korea University, the Bank of Korea, and the 3rd IEFS-EAER Conference in Seoul. The views expressed are those of the authors and do not necessarily represent those of the IMF or its policy. This work was supported (in part) by the Yonsei University Future-leading Research Initiative of 2019 (2019-22-0218). Suhaib Kebhaj, Junhyeok Shin, and Seung Yong Yoo provided excellent research assistance. Any remaining errors are the authors' sole responsibility.

<sup>†</sup> School of Economics, Yonsei University, 50 Yonsei-ro, Seodaemun-gu, Seoul 03722, South Korea. Email: [sangyupchoi@yonsei.ac.kr](mailto:sangyupchoi@yonsei.ac.kr).

<sup>‡</sup> International Monetary Fund, 700 19<sup>th</sup> street NW, 20431 Washington D.C. Email: [dfurceri@imf.org](mailto:dfurceri@imf.org).

<sup>◇</sup> Department of Economics, Princeton University, Princeton, NJ 08544 Email: [chansik.yoon@princeton.edu](mailto:chansik.yoon@princeton.edu).

## I. INTRODUCTION

The binding zero-lower-bound in advanced economies since the Global Financial Crisis (GFC) has rekindled a stream of research on the role of fiscal policy as a key stabilization tool and the potential engine of growth of the domestic economy (Eggertsson, 2011; DeLong and Summers, 2012). The policy debate has also focused on the scope of countries with limited fiscal space to be supported by expansionary fiscal policy in countries with a fiscal and external surplus (Farhi and Werning, 2016; Blanchard et al., 2017; IMF, 2017).

Given this policy debate, it is not surprising that a large body of the empirical literature has analyzed the spillover effects of fiscal shocks, mostly through trade linkages (Auerbach and Gorodnichenko, 2013; IMF, 2013; Nicar, 2015; Faccini et al., 2016; Goujard, 2017; IMF, 2017; Dabla-Norris et al., 2017). While these studies have shown evidence of sizeable fiscal spillovers through trade linkages, much less is known about the magnitude of fiscal spillovers through financial linkages and the international financial stability consequences of domestic fiscal policy. This paper contributes to three strands of literature and the policy debates by providing the first analysis—to the best of our knowledge—of the effect of fiscal shocks on cross-border banking flows.

First, a large body of earlier studies on fiscal policy transmission focused on the impact of a fiscal shock on the domestic economy (Blanchard and Perotti, 2002; Mountford and Uhlig, 2009; Romer and Romer, 2010; Auerbach and Gorodnichenko, 2012), and a more recent stream of research has analyzed the international transmission of fiscal shocks. While these studies mostly focus on trade linkages as a channel of transmission, we analyze financial linkages using cross-border banking data, thereby shedding new light on a potential international transmission channel of fiscal shocks. Our finding suggests that financial linkages are an important transmission mechanism of domestic fiscal shocks, independent of trade linkages.

Second, our work is closely related to the so-called “twin deficit” literature. While textbook accounting identities predict that fiscal deficits should lead to current account deficits, the empirical evidence suggests widely different estimates, and there is even disagreement about the sign of the effect of a fiscal deficit on the current account balance.<sup>1</sup> We find robust evidence of an increase in net foreign

---

<sup>1</sup> For example, Beetsma et al. (2008) find that a one percent GDP increase in public spending is followed by a decline in the trade balance by 0.5 percent of GDP. Similarly, Feyrer and Shambaugh (2012) find that a one percent increase in taxes as a share of GDP improves the U.S. current account by 0.5 percent of GDP. By contrast, Kim and Roubini (2008), find that expansionary U.S. fiscal shocks tend to improve the current account and claim that “twin divergence” is a more suitable

claims by the domestic banking sector after a fiscal expansion, suggesting that the response of banking flows to fiscal shocks contributes to the improvement in the current account following a domestic fiscal expansion. Moreover, we find that an increase in net foreign claims is largely driven by an increase in cross-border claims, while cross-border liabilities remain largely unchanged. Although our results seem to provide support for the “twin divergence” found in the empirical studies, it is important to recognize that bank-related flows are only just one component of the total capital flows, and therefore the analysis provides only a suggestive answer on the effect of fiscal shocks on the current account.

Lastly, our paper is related to the growing literature on global banking and the stability of the international financial system. Between the early 1990s and the GFC, the global economy has witnessed a marked increase in cross-border banking flows, primarily driven by the expansion of global operations of banks through developing networks of physical branches and subsidiaries in foreign countries. These flows were also most severely affected by the GFC (Milesi-Ferretti and Tille, 2011; Broner et al., 2013) and might induce the instability of the domestic financial system independent of domestic conditions (Hahm et al., 2013; Baskaya et al., 2017). However, studies to examine the driving factors of these flows are mostly limited to monetary or financial shocks (Cetorelli and Goldberg, 2011; Kalemli-Ozcan et al., 2013; Bruno and Shin, 2015a; Cerutti et al., 2017; Correa et al., 2017; Avdjiev and Hale, 2018; Choi and Furceri, 2019; Albrizio et al., 2020). Our empirical findings emphasize that fiscal policy innovations in large advanced economies are important drivers of cross-border banking flows.

Among different types of international capital flows, we investigate the effect on cross-border banking flows of a domestic fiscal shock for two reasons. First, the bilateral nature of cross-border banking flow data we use permits a cleaner identification of international fiscal-financial spillovers since the bilateral structure allows controlling for various demand factors in a recipient country, which may confound the interpretation of the empirical findings otherwise. Second, while most previous studies focused on the effect of various shocks on net capital flows, where financial flows are seen only as the counterpart to the current account, the rapid expansion of gross international asset and liability positions calls for a deeper understanding of the spillovers through gross flows that better reflect the

---

description of the historical data. More recently, Ilzetzi et al. (2013) and Kim (2015) find that the sign of the effect of a fiscal deficit on the current account depends on structural characteristics, such as capital openness and exchange rate regimes.

impact on national balance sheets (Forbes and Warnock, 2012; Broner et al., 2013; Bruno and Shin, 2015a).<sup>2</sup>

To the extent that cross-border banking flows have meaningful implications for economic and financial conditions in recipient countries, as suggested by the recent empirical studies (e.g., Cetorelli and Goldberg, 2011; Bruno and Shin, 2015a), identifying the effect of domestic fiscal shocks on cross-border bank lending can shed new light on the overall spillover effects of fiscal policy. From a theoretical point of view, however, the sign of the spillover effects is ambiguous *a priori*, especially once the response of the exchange rate and of the interest rate to a fiscal expansion is considered. For example, both standard Keynesian models, such as the Mundell-Fleming model, and the Real Business Cycle (RBC) type of models typically predict an increase in domestic output shortly after a fiscal expansion.

This leads to the expansion of cross-border bank lending through improved balance sheet conditions of the domestic banking system holding other variables constant. If a fiscal expansion is followed by the appreciation of domestic currencies as in the textbook models, cross-border bank lending is expected to increase further (Bruno and Shin, 2015a; Choi and Furceri, 2019). However, the extension of the standard model allowing for the deep habits (Ravn et al., 2012) or the spending reversals (Corsetti et al., 2012) can also generate real depreciation, which would have the opposite effect on cross-border bank lending.

We estimate the dynamic response of cross-border bank lending to exogenous domestic fiscal (spending and revenue) shocks to test international fiscal-financial spillovers.<sup>3</sup> In particular, we apply the local projection method (Jordà, 2005) to the cross-border banking data from the Bank for International Settlements Locational Banking Statistics. The bilateral structure of this dataset allows us to control for various external and macroeconomic shocks affecting credit demand in a recipient country. Thus, our empirical strategy mitigates a common criticism that countries are often subject to global shocks at the same time. In addition, we use exogenous measures of fiscal shocks taken from various

---

<sup>2</sup> However, since a bulk of cross-border bank lending in our dataset consists of bank loans and deposits rather than a bank's holding of debt securities, our analysis remains silent about other types of financial linkages such as international bond flows with the increasing importance in shaping global liquidity recently.

<sup>3</sup> In contrast, we do not directly measure cross-border fiscal multipliers through financial linkages—an analogy to measuring fiscal multipliers through trade linkages as in Auerbach and Gorodnichenko (2013) and Goujard (2017)—for the following reasons. First, we are mainly interested in the consequence of domestic fiscal policy on cross-border financial stability in the financially integrated world, thereby shedding new light on the link that was never analyzed before. Second, unlike trade linkages that enter directly to the demand component of GDP, financial linkages measured by the volume of cross-border banking flows are expected to affect output indirectly.

sources—Romer and Romer (2010) for revenue and Ramey and Zubairy (2018) for spending shocks in the United States; and Auerbach and Gorodnichencko (2012b) for spending shocks in other small open economies—to gauge the causal effect of fiscal shocks on cross-border bank lending.

Given the plenty of empirical evidence about the nonlinear effect of fiscal shocks on output (Perotti, 1999; Auerbach and Gorodnichencko, 2012; Caggiano et al., 2015), we further investigate whether the effect of fiscal shocks depends on the underlying economic regimes (good vs. bad times) or types of shocks (stimulus vs. consolidation). We also analyze whether certain types of a recipient country’s characteristics (such as the exchange rate regime and the degree of capital account openness guided by the Mundellian trilemma) amplify or dampen the cross-border fiscal-financial spillovers, which bears significant policy implications.

The results of the paper can be summarized as follows:

- Expansionary fiscal shocks in a source economy lead to an economically and statistically significant increase in cross-border bank lending to other countries. Interestingly, the effects are larger for revenue than spending shocks. In the United States, the effect of one percent of GDP increase in government spending (tax cut) on cross-border bank lending is equivalent to that of an exogenous decrease in the federal funds rate by about 25bp (50bp).
- When jointly estimated with exogenous U.S. monetary policy shocks and the VIX shocks, U.S. fiscal policy shocks still have a significant effect on cross-border bank lending, implying that U.S. domestic fiscal policy action can be an independent and important source of the so-called “global financial cycle.”
- Cross-border fiscal-financial spillovers are larger when a fiscal expansion in the source economy is undertaken during a period of slack. This larger effect is consistent with the evidence of larger fiscal multipliers in recessions. In addition, the adverse effect of fiscal consolidation on cross-border bank lending tends to be larger in absolute value than the positive effect of the same size of fiscal expansion.
- We find some suggestive evidence that capital controls are effective in moderating capital inflows. In contrast, we find that the degree of fiscal-financial spillovers does not significantly depend on a recipient country’s exchange rate regime, suggesting—as argued by Rey (2015)—that the exchange rate regime is mostly irrelevant for cross-border financial spillovers.

The remainder of the paper is organized as follows. Section II describes the data on cross-border banking flows and exogenous measures of fiscal shocks. Section III presents the empirical methodology. Section IV provides an extensive analysis of international fiscal-financial spillovers, including various robustness tests and additional exercises. Section V concludes. The online appendix provides a summary of data, a battery of robustness checks, and the results of the additional exercises.

## II. DATA

### A. Data on Cross-border Banking Flows

We use data on cross-border claims from the Bank for International Settlements (BIS)' Locational Banking Statistics (LBS) to identify international financial-financial spillovers. This dataset provides a geographical breakdown of banks' counterparties and the information about the currency composition of their balance sheets. The LBS dataset captures outstanding claims and liabilities of internationally active banks located in reporting countries against counterparties residing in more than 200 countries. The data is compiled following the residency principle that is consistent with the Balance of Payments (BoP) statistics.<sup>4</sup>

In this regard, the major advantage of the BIS LBS data, compared to the banking flows collected from the BoP statistics, is the detailed breakdown of the reported series by recipient countries. Banks record their positions on an unconsolidated basis, including intragroup positions between offices of the same banking group. Currently, banking offices located in 46 countries, including many offshore financial centers, report the LBS. The LBS dataset captures around 95 percent of all cross-border interbank business (Bank for International Settlement, 2017). The bulk of cross-border bank claims and liabilities takes the form of loans and deposits of the domestic banking sector vis-à-vis all counterparty sectors (including banks and non-banks, and the private and public sector).

Another main advantage of the BIS LBS is that the currency composition of cross-border claims and liabilities is available so that cross-border banking flows expressed in the USD are adjusted for movements in exchange rates. The adjustment for exchange rate movements turns out to be crucial

---

<sup>4</sup> While the data is made public by the BIS at the aggregate level, the data on bilateral claims and liabilities between reporting (source) and counterparty (recipient) countries is available to reporting central banks.

in our setup because of both theoretical and empirical evidence on the effect of fiscal shocks on the exchange rate, which is, in turn, tightly related to the effect on cross-border bank lending.<sup>5</sup>

The time-series coverage of the LBS database varies significantly across countries. Some advanced economies like the United States have reported these statistics since 1977, while most emerging market economies started reporting statistics only after the 2000s. Thanks to the extensive availability of cross-border banking flow data and well-identified exogenous fiscal shock data at a quarterly frequency, we begin with analyzing cross-border spillovers of fiscal shocks through the bank lending channel using the U.S. data from 1990Q1 to 2012Q4. We then move to the analysis of the other 16 OECD countries using a semi-annual dataset to test whether our findings from the U.S. analysis can be generalized to other small open economies.

Throughout the analysis, we drop offshore financial countries from our sample using the IMF classification because their behaviors might differ substantially from the rest of the sample. In the analysis of small open economies—after dropping offshore financial centers and the United States—we focus on 16 OECD countries where the measure of exogenous fiscal shocks constructed by Auerbach and Gorodnichenko (2012) is available. Following Choi and Furceri (2019), we further drop observations with the size of cross-border positions less than \$5 million, or with negative total outstanding claims. The dependent variables in the upper and lower one percentile of the distribution are excluded from the sample to eliminate outliers.<sup>6</sup>

The online appendix A provides a detailed summary of the cross-border banking data used in the analysis, including the list of reporting countries and their counterparties, their exchange rate regime and capital openness, as well as the size of cross-border claims and liabilities as a share of the GDP and the aggregate and bilateral cross-border lending by the United States for illustration.

## **B. Data on Fiscal Shocks**

We rely on existing measures of exogenous fiscal shocks to gauge the causal effect of fiscal shocks on cross-border banking flows. For the case of the United States, we use both exogenous

---

<sup>5</sup> Adjusted changes in amounts outstanding are calculated, as an approximation for flows. In addition to exchange rate fluctuations, the quarterly flows in the locational datasets are corrected for breaks in the reporting population. In Table A.1 in the online appendix, we summarize the data availability in the BIS International Banking Statistics.

<sup>6</sup> We confirm that our main findings are hardly affected by such data-cleaning procedures. For example, censoring the dependent variables at the one percentile of the distribution or including the all observations hardly changes the main findings qualitatively.



spending shocks by Ramey and Zubairy (2018) and revenue shocks by Ramey and Ramey (2010) based on a narrative approach (RZ shocks and RR shocks, henceforth). We use exogenous spending shocks based on the unpredictable component of government spending for the analysis of small open economies following the approach by Auerbach and Gorodnichenko (2012). The online appendix A provides details of how the three exogenous measures of fiscal shocks are constructed.

### **III. EMPIRICAL METHODOLOGY**

#### **A. General Framework**

We use Jordà (2005)'s local projection method to assess the dynamic effect of domestic fiscal shocks on cross-border bank lending. The local projection method has been advocated by Auerbach and Gorodnichenko (2012) and Ramey and Zubairy (2018) among others, as a flexible alternative to VAR specifications without imposing the pattern generated by structural VARs.<sup>7</sup> Auerbach and Gorodnichenko (2012) further confirm that the response of output to their exogenous government spending shocks—the one we use for the analysis of small open economies—is very similar between structural VARs and local projections. Thus, we believe our findings using the local projection method can be comparable to those obtained using structural VARs in the previous literature. We adopt the local projection method over commonly used VAR models to construct an impulse-response function in this paper for the following reasons.

First, the exogenous shocks taken from the literature are either constructed by a narrative approach (Romer and Romer, 2010 and Ramey and Zubairy, 2018) or already orthogonalized to the contemporaneous macroeconomic conditions by controlling for macroeconomic forecasts (Auerbach and Gorodnichenko, 2012). For this reason, we do not need to identify structural shocks using restrictions in VAR models—a common approach in many empirical analyses (e.g., Blanchard and Perotti, 2002).

Second, our estimation entails a large bilateral panel dataset with the constellation of the fixed effects, making a direct application of standard VAR models more difficult. Thus, the local projection method obviates the need to estimate the equations for those other than the variable of interest, thereby economizing on the number of estimated parameters significantly.

---

<sup>7</sup> Under the maintained assumption that the structural VAR is correctly specified, the patterns should be the same.

Third, the local projection method is particularly suited to estimating nonlinearities (for example, how the effect of fiscal shocks differs during expansions and recessions), as its application is much more straightforward compared to complex nonlinear structural VAR models, such as Markov-switching or threshold-VAR models. Moreover, the local projection method allows direct incorporation of various features of recipient economies, such as the exchange rate regime or capital account openness. This feature of the method is particularly useful in exploring a source of heterogeneous responses across countries.

Lastly, the error term in the following panel estimations is likely to be correlated across countries. This correlation would be difficult to address in the context of nonlinear VAR models, but it is easy to handle in a linear estimation by either clustering standard errors by time or using Driscoll-Kraay standard errors (Driscoll and Kraay, 1998).

Despite the advantages mentioned above, the local projection method has some drawbacks compared to structural VARs. Most importantly, structural VARs allow for the dynamic endogenous response of various macroeconomic variables, such as the interest rate or the exchange rate to fiscal shocks, which can also affect the dynamics of cross-border banking flows. The local projection method adopted in this paper, however, does not allow for the full dynamic interaction among variables. We revisit this issue in the following section by investigating the response of the key macroeconomic variables to the identified fiscal shocks.

The local projection method simply requires estimating a series of regressions for each horizon  $h$  for each variable. We first present the general framework in a panel context and then derive the simplified version for the U.S. analysis. Following Auerbach and Gorodnichenko (2012) and Ramey and Zubairy (2018), we run a series of regressions for different horizons,  $h = 1, 2, \dots, H$  as follows:

$$y_{i,j,t+h} - y_{i,j,t-1} = \alpha_{i,j}^h + \alpha_{j,t}^h + \beta^h Fshock_{i,t} + \sum_{p=1}^n \gamma^h X_{i,j,t-p} + \varepsilon_{i,j,t+h}, \quad (1)$$

where  $i$  and  $j$  indicate the reporting ('source') and counterparty ('recipient') countries, respectively;  $y_{i,j,t}$  is the log of cross-border lending from global banks located in country  $i$  to borrowers in countries  $j$  in time  $t$ ;  $Fshock_{i,t}$  is a measure of exogenous fiscal shock in a country  $i$ .  $X_{i,j,t}$  is a set of control variables, including lags of the dependent variable  $y_{i,j,t}$  and lags of the fiscal shocks;  $\alpha_{i,j}^h$  is source-recipient country fixed effect and  $\alpha_{j,t}^h$  is a recipient-time fixed effect.  $\beta^h$  is the coefficient of interest.

We gauge the dynamic effect of fiscal shocks on cross-border bank lending by tracing  $\beta^h$  over  $h$ -horizons.<sup>8</sup>

In combination with the exogenous nature of fiscal shocks, the bilateral structure of the LBS data achieves a clean identification of cross-border fiscal-financial spillovers, largely immune to endogeneity issues. In particular, the advantages of having a bilateral panel dataset are threefold. First, it mitigates concerns about reverse causality. While it is difficult to identify causal effects of country-specific shocks using aggregate capital flows, it is much more likely that domestic fiscal shocks in a country  $i$  affect cross-border bank lending towards a particular country  $j$  than the other way around. Second, the inclusion of the fixed effects  $\alpha_{i,j}^h$  specific to a country pair of a source country  $i$  and a recipient country  $j$  allows us to control for any unobserved time-invariant characteristic between two countries, such as a set of gravity factors widely used in the trade literature.<sup>9</sup> Third, the inclusion of recipient country-time fixed effects allows us to control for any macroeconomic shocks affecting recipient countries, including external and idiosyncratic recipient-specific shocks as well as the indirect impact of fiscal expansion through other recipient countries. The recipient country-time fixed effects largely control for an autocorrelation issue, although we account for this issue explicitly when computing standard errors. It also maximizes the sample coverage of our analysis because some recipient countries do not necessarily have data on every control variable.

## B. Framework for the Analysis of U.S. Fiscal Spillovers

In this section, we explain our main framework to analyze the effect of domestic fiscal shocks on U.S. cross-border bank lending. We estimate the following model of the U.S. economy, which can be considered as a dynamic version of Feyrer and Shambaugh (2012), who study the effect of exogenous U.S. fiscal shocks on the current account and investment of foreign countries:

$$y_{j,t+h} - y_{j,t-1} = \alpha_j^h + \beta^h Fshock_t + \sum_{p=1}^n \gamma^h X_{j,t-p} + \varepsilon_{j,t+h}, \quad (2)$$

where  $y_{j,t}$  is the log of exchange rate-adjusted cross-border claims from the U.S. located global banks to borrowers in countries  $j$  in time  $t$ ;  $Fshock_t$  is a measure of exogenous U.S. fiscal shocks: RZ or RR shocks.  $X_{j,t}$  is a set of control variables, including lags of the dependent variable  $y_{j,t}$  and the fiscal

---

<sup>8</sup> We also include a linear time trend, but it hardly changes the estimation results.

<sup>9</sup> The inclusion of  $\alpha_{i,j}^h$  is more flexible than controlling for any set of common time-invariant regressors, as those commonly used in the gravity model of international finance and controls simultaneously for any time-invariant characteristics specific to a country  $i$  and a country  $j$ , respectively.

shock variable  $Fshock_t$ , and various control variables in the recipient country  $j$  and their lags. To keep our specification parsimonious, in the baseline analysis, we control for real GDP growth and the policy rate in recipient countries.<sup>10</sup>  $\alpha_j^h$  is a recipient country-fixed effect, which controls unobserved time-invariant characteristics specific for a country  $j$ . Following Auerbach and Gorodnichenko (2012) and Feyrer and Shambaugh (2012), standard errors are clustered by time to account for the fact that the shock is identical for all countries in any given period.

As discussed above, we use two sets of the identified U.S. fiscal shocks from the recent literature. Our benchmark is data on quarterly government spending shocks constructed by Ramey and Zubairy (2018). While we use data on quarterly tax shocks collected by Romer and Romer (2010) for a robustness check, one should note that adjustments in government spending and taxes do not need to have symmetric effects (Mountford and Uhlig, 2009). Following Romer and Romer (2010) and Auerbach and Gorodnichenko (2012), we normalize the size of fiscal shocks by the size of GDP in the last period to rule out the contemporaneous fiscal multiplier effect. Equation (2) is estimated for  $h=0, 1, 2, \dots, 7$ , so that we trace the dynamic effect of fiscal shocks over two years.

After dropping outliers and missing observations following the criterion explained above, our baseline estimation of the U.S. fiscal shocks includes cross-border lending to 45 recipient countries.<sup>11</sup> In the baseline analysis, we use four lags of control variables in  $X_{j,t}$  (i.e.,  $n = 4$ ), but the selection of the lag length does not affect our findings in a meaningful way. When using RR shocks, our estimation period covers until 2007Q4.

## IV. RESULTS

### A. Analysis of Cross-border Spillovers for U.S. Fiscal Shocks

**Baseline results.** Table 1 summarizes the regression coefficients with their statistical significance obtained by estimating equation (2). The coefficients on the lagged dependent variable are negative and highly statistically significant, suggesting that the growth rate of the cross-border bank lending is mean-reverting. The coefficients on a recipient country's real GDP growth are positive and statistically

---

<sup>10</sup> When policy rates are not available, we use interbank rates. When interbank rates are not available, we use money market rates.

<sup>11</sup> Estonia, Latvia, Slovenia, and Ukraine among the countries presented in Table 1 are dropped in this analysis.

significant in most cases, which is consistent with the stylized fact that local economic growth is a strong pull factor of international capital flows.

The sign on a recipient country's policy rate is largely negative and significant, suggesting that global banks in the United States lend less to a country with a higher domestic policy rate. While this finding is in contrast to Bruno and Shin (2015a), who find that a higher interest rate in a recipient country increases cross-border bank lending, it is mostly driven by emerging market recipient economies where the interest rate is countercyclical. In such economies, a higher interest rate often signals economic recessions or financial crises due to the increased risk premium. When we restrict our recipient countries to be advanced economies only, we find a positive and statistical coefficient on the recipient country's policy rate.

Most importantly, we find that expansionary fiscal shocks increase cross-border bank lending from the United States significantly. A one percent increase in RZ's exogenous government spending as a share of GDP leads to about a 3 percent increase in cross-border bank lending after two quarters. The effect is larger for revenue shocks, with a decrease in RR's exogenous tax change of one percent of GDP increasing cross-border bank lending by about 6 percent at the peak (after one year).<sup>12</sup> However, one should note that the size of a typical exogenous spending shock is much larger than a typical exogenous revenue shock—as shown in Figure A.3. Once we take into account the size of the shock by normalizing the response to the one standard deviation shock, the effect of RZ shocks is about twice larger than RR shocks.

Figure 1 visualizes the dynamic response of cross-border bank lending presented in Table 1. The left panel in Figure 1 shows the response using RZ's government spending shocks, while the right panel shows the response using RR's exogenous tax shocks. Although we obtain a wider confidence band from using RR's exogenous shocks, this is not surprising as we only have nine RR's exogenous shocks during our sample period. For the rest of the paper, we report the impulse response functions rather than estimation tables to ease interpretation.

**Robustness checks.** In this section, we test the robustness of the finding that the U.S expansionary domestic fiscal shocks increase cross-border bank lending from the United States. We investigate the sensitivity of our results to (i) the inclusion of domestic control variables, (ii) the inclusion of additional

---

<sup>12</sup> The larger effect on cross-border bank lending of a tax cut than government spending—when they are measured as a share of GDP—is in line with the finding of Mountford and Uhlig (2009) that deficit-financed tax cuts have a larger effect on GDP than deficit-financed spending.

foreign controls, (iii) different lag length selections, (iv) the estimation of the model in level, (v) an alternative way of computing standard errors, and (vi) controlling for bilateral imports. The results are presented in the online appendix B to save space, and we discuss them briefly in the main text.

To the extent to which our measure fiscal shocks are truly exogenous, we do not need to control for other domestic variables to infer the causal effect of fiscal shocks on cross-border banking flows. However, we control for various push factors to guard against any potential endogeneity issue. Based on the extensive literature on international capital flows, we consider the four lags of the following set of controls: real GDP growth, stock market growth (S&P500), the CPI inflation rate, and the monetary policy rate (federal funds rate), and the share of private sector bank credit in GDP.<sup>13</sup> As shown in Figure B.1 in the online appendix B, the inclusion of additional control variables does not lead to any material changes in the impulse response functions, lending support to the exogeneity of the identified fiscal shocks we used.

Nevertheless, there might be additional pull factors in the recipient countries affecting cross-border banking flows that are not captured by our current controls (real GDP growth and the policy rate). For example, despite the exogeneity of our identified fiscal shocks in a source country to its domestic economic conditions, they are not necessarily orthogonal to the condition of the rest of the world, which could affect loan demand from a recipient country simultaneously. In parallel with the exercise above, we additionally control for the following domestic pull factors, including stock market growth, the CPI inflation rate, growth of the nominal exchange rate vis-à-vis USD, and the share of private sector bank credit in GDP. Figure B.2 confirms that our key finding holds in this case. While the additional control variables mostly enter with an expected sign, and they are jointly significant in the combination of lags, the coefficients on the fiscal shock are hardly affected.

We have used four lags of the dependent variables and control variables, given the quarterly frequency of the data. We demonstrate that our findings do not depend critically on the selection of lag length by showing the estimation results alternatively using eight lags. Figure B.3 confirms that our results hardly change with the selection of lag length.<sup>14</sup> Moreover, the current model is specified in first differences, which ignores the potential influence of cointegration among the variables on our inference. To guard against this critique, we also estimate equation (2) in level, still including lags of the dependent

---

<sup>13</sup> See Choi and Furceri (2018) for detailed discussions on choosing control variables.

<sup>14</sup> We also test the robustness of our results using two lags and find that the impulse response functions are very similar. To save space, this result is available upon request.

variable  $y_{j,t}$ . Figure B.4 confirms that our finding does not depend on whether we include the dependent variable in levels or first differences.

While we have clustered standard errors at the time level in the baseline specification, we test the robustness of our findings by clustering standard errors at the recipient country level or at the recipient country-time level. We also use Driscoll-Kraay standard errors that allow arbitrary correlations of the errors across countries and time. We only report the results from using Driscoll-Kraay standard errors in Figure B.5 to save space. Still, standard errors clustered by the recipient country-level and the recipient country time-level are similar to those clustered by the time-level.

The use of the recipient country-fixed effect and a recipient country’s macroeconomic variables cannot fully control for potential time-varying factors affecting cross-border banking flows at the bilateral level. One obvious candidate for such factors is bilateral trade flows between the United States and its counterpart countries. This variable is particularly relevant for the study of international capital flows, as the current account and the financial account are tightly related by the accounting identity, and the trade balance is a major determinant of the size of the current account. Moreover, Auerbach and Gorodnichenko (2013) show that a share of government purchases translates (directly or indirectly) into imports from other countries, which stimulate demand in those countries.

While our use of the variable corresponding to only a subset of total capital flows—the sum of direct investment, portfolio equity, and debt and other investment flows—mitigates this criticism,<sup>15</sup> we test the robustness of our findings by adding extra control variables capturing bilateral trade flows. We take bilateral trade flow data from the IMF Directions of Trade Statistics. We add the growth of U.S. imports (and their lags) from a country  $j$  and re-estimate equation (1). Figure B.6 shows that our results are nearly identical when controlling for the bilateral import channel, consistent with the finding from Choi and Furceri (2019) that bilateral banking flows are largely independent of bilateral trade flows.<sup>16</sup>

***Transmission channels.*** The effect of domestic fiscal shocks on cross-border bank lending depends on the initial response of domestic variables influencing these flows, such as the GDP, the interest rate, and the exchange rate. In this section, we estimate the effect of the exogenous fiscal shocks on the real

---

<sup>15</sup> The category “other investment” is the residual in the balance of payment statistics and includes loans, currency and deposits, and trade credits.

<sup>16</sup> Our conclusions hardly change when we use export growth instead of import growth.

effective exchange rate and real interest rate (their effect on output is well documented; see Romer and Romer, 2010; Ramey and Zubairy, 2018).

Figure 2 shows the dynamic responses of each variable to both fiscal shocks during the sample period. First, we do not find evidence for the traditional Mundell-Fleming channel, as the real exchange rate depreciates, not appreciates after expansionary spending and revenue shocks (in Panel A). However, such real depreciation following expansionary fiscal shocks in the United States is consistent with many empirical studies using structural VARs (Kim and Roubini, 2008; Corsetti et al., 2012; Ravn et al., 2012).<sup>17</sup>

In contrast, we find some evidence for the monetary accommodation channel, as shown in Panel B of Figure 2. Monetary authorities tend to lower the policy interest rate following the spending (or revenue) shock, which is consistent with the finding of Kim and Roubini (2008) when they use real government consumption as a measure of fiscal expansion.<sup>18</sup> The monetary accommodation in response to a domestic fiscal expansion appears an important determinant of the cross-border fiscal-financial spillovers. According to the standard bank lending channel, a decline in the domestic policy rate in response to a fiscal expansion makes lending to foreign borrowers more attractive for domestic banks by reducing funding costs. As a result, cross-border lending (outflows) from the domestic banking sector exceeds cross-border borrowing (inflows) of the domestic banking sector, which increases its net foreign asset position (corresponding to current account improvement) and depreciates the domestic currency.

***Fiscal policy vs. monetary policy and VIX.*** To test whether fiscal shocks have an independent effect on cross-border lending from monetary policy, we re-estimate the impulse response functions after controlling for monetary policy shocks. We employ the exogenous monetary policy shock series constructed by Coibion (2012), who extends the monetary policy shocks identified by Romer and Romer (2004) using a narrative approach. Romer and Romer (2004) extract measures of the change in the Fed's target interest rate at each meeting of the Federal Open Market Committee (FOMC) and regress this measure of policy changes on the Fed's real-time forecasts of relevant macroeconomic variables. They identify an exogenous measure of monetary policy shocks by taking the residuals from

---

<sup>17</sup> As an attempt to identify the source of the real exchange rate response, we replace the real effective exchange rate with the nominal effective exchange rate. We find that the nominal effective exchange rate also depreciates significantly, implying that the real exchange rate depreciation following the expansionary fiscal shock is largely driven by the nominal exchange rate depreciation.

<sup>18</sup> We obtain a similar result by using the Wu-Xia shadow federal funds rate (Wu and Xia, 2016) instead since 2009.



the regression above. Coibion (2012) further extends this monetary policy shock series by explicitly allowing for heteroskedasticity in the innovation via a GARCH modeling.<sup>19</sup>

Given the importance of the VIX in driving the global financial cycle (Rey, 2015), a natural question is whether our findings are biased due to the omission of this variable. To address this issue and compare the importance of domestic fiscal shocks in driving cross-border banking flows with that of the monetary policy and the global financial cycle, we augment equation (2) with both exogenous monetary policy shocks and the VIX shocks (and their four lags).<sup>20</sup> Figure 3 shows that both measures of U.S. fiscal shocks still have significant effects on cross-border bank lending independent of these shocks.<sup>21</sup> In this joint estimation, the effect of a one percent increase in government spending (tax cut) as a share of GDP on cross-border bank lending is equivalent to that of an exogenous decrease in the federal funds rate by about 25bp (50bp), suggesting that the effect of fiscal shocks is not only statistically but economically significant.<sup>22</sup>

***Effects on banks' net foreign asset position.*** To shed more light on the transmission channel of fiscal shocks, we re-estimate equation (2) using domestic banks' net foreign asset position, which corresponds conceptually to the current account balance. By looking at gross outflows and inflows separately, we can also identify a source of changes in net flows following domestic fiscal shocks. We normalize the net foreign asset position (bilateral cross-border claims minus liabilities) by the recipient country's lagged nominal GDP (i.e.,  $Y_{j,t} = \frac{claims_{j,t} - liabilities_{j,t}}{GDP_{j,t-1}}$ ).<sup>23</sup>

Figure 4 shows the response of the net foreign asset position in response to both types of fiscal shocks. Consistent with some empirical studies that found the improvement in the current account after

---

<sup>19</sup> Fiscal shocks identified by Ramey and Zubairy (2018) and monetary policy shocks identified by Coibion (2012) are indeed near orthogonal (correlation of 0.01).

<sup>20</sup> The response of cross-border bank lending to the fiscal shocks hardly changes when we replace the VIX with U.S. economic policy uncertainty constructed by Baker et al. (2016).

<sup>21</sup> The estimation period is from 1990Q1 to 2008Q4, as the monetary policy shock series is only available until 2008Q4.

<sup>22</sup> The exogenous monetary policy shocks have a significantly negative effect on cross-border bank lending (Figure B.7 in the appendix), which is in sharp contrast to the finding of Cerutti et al. (2017) and Correa et al. (2017), who find a positive effect of domestic monetary tightening on cross-border bank lending using the policy rate itself as a measure of monetary policy shocks. On the other hand, our finding is consistent with Avdjiev and Hale (2018) and Albrizio et al. (2020), who find a negative relationship between the federal funds rate and U.S. cross-border bank lending when an increase in the federal funds rate is driven by exogenous changes in the monetary policy stance.

<sup>23</sup> Unlike the previous case of cross-border asset positions, we cannot take the log of net position. Instead, we normalize the net position by the size of a recipient country's GDP:  $y_{j,t} = \frac{claims_{j,t} - liabilities_{j,t}}{GDP_{j,t-1}}$  and  $y_{j,t+h} = \frac{claims_{j,t+h} - liabilities_{j,t+h}}{GDP_{j,t-1}}$ .

a domestic fiscal expansion, we find that the net foreign asset position by the domestic banking sector increases significantly.<sup>24</sup> Figure B.8 in the appendix also plots the response of cross-border borrowing separately by replacing cross-border claims in equation (2) with cross-border liabilities. Cross-border borrowing does not respond significantly to domestic fiscal shocks, suggesting that an increase in the net foreign asset position found in Figure 4 is mostly driven by an increase in cross-border claims.

So far, we have focused on the average effect of fiscal shocks on cross-border banking flows under the assumption of homogenous regression slopes across cross-sectional units. However, using both RZ and RR shocks, the slope homogeneity test of Pesaran and Yamagata (2008) rejects the null hypothesis of homogeneous slopes, especially as the horizon increases.<sup>25</sup> Motivated by the test results, we conduct additional exercises to understand the source of heterogeneity.

***Fiscal-financial spillovers during recessions vs. expansions.*** Despite the robust evidence that an expansionary U.S. fiscal shock increases cross-border bank lending from the United States, there is vast empirical evidence that the effect of fiscal shocks on output is nonlinear (Perotti, 1999; Auerbach and Gorodnichenko, 2012; Caggiano et al., 2015; Choi and Shin, 2020). Thus, the average response of cross-border bank lending we found may mask substantial heterogeneity depending on the underlying economic regime at the time of the shock (good vs. bad times) or a type of shocks (fiscal stimulus vs. fiscal austerity).

We estimate nonlinear versions of equation (2) to account for this possibility. For the remaining exercises, we focus on the measure of RZ shocks, as it allows more data to estimate nonlinear models with a larger set of parameters, and it is conceptually consistent with AG's spending shocks used in the analysis of small open economies. The results obtained with RR's revenue shocks are qualitatively similar and available upon request, but the statistical significance tends to be weaker. We estimate the following equation in which the dynamic response is allowed to vary with the state of the economy:

$$y_{j,t+h} - y_{j,t-1} = F(z_{t-1}) \left( \alpha_{R,j}^h + \sum_{p=1}^n \gamma_R^h X_{j,t-p} + \beta_R^h Fshock_t \right) + (1 - F(z_{t-1})) (\alpha_{E,j}^h + \sum_{p=1}^n \gamma_E^h X_{j,t-p} + \beta_E^h Fshock_t) + \varepsilon_{j,t+h} \quad (3)$$

---

<sup>24</sup> Our results are robust to the weighted regression where observations are weighted by the recipient country's nominal GDP.

<sup>25</sup> We thank an anonymous referee for this helpful suggestion. We use a standardized version of Swamey's test for slope homogeneity implemented by Bersvendsen and Ditzen (forthcoming). When  $h > 0$ , the null hypothesis is always rejected at the 5% significance level.

with  $F(z_t) = \frac{\exp(-\theta z_t)}{1 + \exp(-\theta z_t)}$  and  $\theta > 0$ ,

where  $z_t$  is an indicator of the state of the economy normalized to have unit variance. The estimated parameters depend on the average behavior of the economy in the historical sample between  $t$  and  $t+h$ , given the shock, the initial state, and the control variables. The parameter estimates on the control variables incorporate the average tendency of the economy to evolve between states. Therefore, the estimates incorporate both natural transitions and endogenous transitions from one state to the other that occur on average in the data. The indicator of the state of the economy is the five-quarter moving average of real GDP growth and  $F(z_t)$  is a smooth transition function used to estimate the effect of fiscal shocks in expansions vs. recessions.<sup>26</sup> We choose  $\theta = 1.5$  following Auerbach and Gorodnichenko (2012) so that the economy spends about 20 percent of the time in a recessionary regime.<sup>27</sup>

This approach is equivalent to the smooth transition autoregressive model developed by Granger and Teräsvirta (1993) and has the following advantages. First, compared with a model in which each dependent variable would interact with a measure of the business cycle position, it permits a direct test of whether the effect of fiscal shocks on cross-border banking flows varies across different regimes. Second, compared with estimating structural VARs for each regime, it allows the effect of fiscal shocks to change smoothly between recessions and expansions by considering a continuum of states to compute the impulse response functions, thus making the response more stable and precise. Third, we can use our full sample for estimation, which makes our estimates as precise and robust as possible. As shown in Figure A.4. in the online appendix, the probability of a recession regime, we estimate using a smooth transition function captures well the official NBER recession dates.

The coefficients  $\beta_E^h$  and  $\beta_R^h$  trace the dynamic response to fiscal shocks when the economy is in recessions and expansions, respectively. Figure 5 contrasts the dynamic responses during recessions and expansions using RZ's spending shocks. Consistent with the existing empirical evidence regarding the size of fiscal multipliers, the average response of cross-border bank lending to an increase in government spending in Figure 1 also masks substantial heterogeneity depending on the underlying economic regime. Fiscal-financial spillovers tend to be larger when a fiscal expansion in the source economy is undertaken during a period of slack. This larger effect is consistent with the prevailing

---

<sup>26</sup> The results, available upon request, are similar when considering a measure of output gap instead.

<sup>27</sup> Our results hardly change when using alternative parameter values of  $\theta$  between 1 and 6.

empirical evidence of larger fiscal multipliers during recessions and the recent finding by Auerbach and Gorodnichenko (2013) that international fiscal-output spillovers are larger when a source country is in recessions.

***Fiscal-financial spillovers of fiscal stimulus vs. fiscal austerity.*** The adverse effect of fiscal austerity on cross-border banking flows may be different than the positive effect of the same size of the fiscal stimulus. To test for this potential asymmetry, we estimate the following specification:

$$y_{j,t+h} - y_{j,t-1} = \alpha_j^h + \beta_+^h D_t Fshock_t + \beta_-^h (1 - D_t) Fshock_t + \sum_{p=1}^n \gamma^h X_{j,t-p} + \varepsilon_{j,t+h}, \quad 4)$$

where  $D_t$  is a dummy variable that takes a value of one for an increase in government spending and zeroes otherwise. Then we trace the coefficients  $\beta_+^h$  and  $\beta_-^h$  to gauge the effect of fiscal expansion and consolidation, respectively. The strong asymmetric responses are presented in Figure 6; the adverse effect of fiscal consolidation on cross-border bank lending is larger than the positive effect of the same size of fiscal expansion in an absolute term, suggesting that fiscal consolidation in the United States has a more negative spillover effect into other countries than the one implied by the baseline estimation.

***Fiscal-financial spillovers and recipient countries' characteristics.*** Motivated by the potential heterogeneity in the response of cross-border banking flows to fiscal shocks, we ask whether certain types of a recipient country's characteristics amplify or dampen the spillover effect we found in the previous section. Guided by the well-known Mundellian trilemma that countries can pursue two of three options: fixed exchange rates, domestic monetary autonomy, and capital mobility (Mundell, 1963; Obstfeld et al., 2005), we ask whether the exchange rate regime and capital openness affect the size of international fiscal-financial spillovers.

Although international fiscal-financial spillovers might be beneficial for recipient countries without their own fiscal space in stimulating aggregate demand, they could equally have a de-stabilizing effect if a fiscal consolidation in a large and systematic economy is directly exported to a country in needs of external financing. For example, Hahm et al. (2013) show that this "non-traditional" form of financing is associated with greater risk-taking in the banking sector, thereby making the domestic financial system more likely to be linked to international capital markets and hence sensitive to global conditions. The fact that recipient countries can experience volatility for reasons independent of domestic policies makes answering this question particularly relevant from a financial stability perspective.

Again, compared to structural VARs, the local projection method allows for a straightforward interaction between domestic fiscal shocks and characteristics of the recipient countries. We estimate the following equation, which is a minor extension of equation (4):

$$y_{j,t+h} - y_{j,t-1} = \alpha_j^h + \beta_1^h D_{j,t} Fshock_t + \beta_2^h (1 - D_{j,t}) Fshock_t + \sum_{p=1}^n \gamma^h X_{j,t-p} + \varepsilon_{j,t+h}. \quad (5)$$

The only difference from equation (4) is that now we interact  $Fshock_t$  with an indicator variable  $D_{j,t}$  regarding the status of each recipient country in time  $t$ ; and  $X_{j,t}$  also includes the four lags of  $D_{j,t}$ . For example, when testing the role of exchange rate regimes,  $D_{j,t}$  takes a value of one if a recipient country  $j$  is classified as a fixed exchange rate regime (peg) with respect to the United States in time  $t$ , and zero, otherwise.

We use the updated version of binary regime classification by Shambaugh (2004) to sort out *de facto* pegged and floating exchange rate regimes. In Shambaugh's classification, a country is classified as pegged if its official nominal exchange rate stays within  $\pm 2$  percentage bands over the course of the year against the base country. The base country is chosen based on the declared base, the history of a country's exchange rate, by comparing its exchange rate to a variety of potential base countries and by looking at dominant regional currencies. Non-pegs are also assigned a base determined by the country they peg to when they are pegging at other times in the sample. The floating regime does not necessarily include pure floats only but includes all sorts of non-pegged regimes.<sup>28</sup> In the analysis of the international panel data in the following section, we use country-specific base currencies other than the dollar and account for the introduction of the euro.<sup>29</sup>

In the case of capital account openness, we use the updated version of the Chinn-Ito index (Chinn and Ito, 2008). This index is a widely-used *de facto* measure of the country's capital controls and available back to 1970 for a large group of countries. Specifically, we focus on the KAOPEN measure of capital controls in Chinn and Ito (2008), updated in July 2017. KAOPEN is based on the

---

<sup>28</sup> We download the updated annual dataset from Shambaugh Exchange Rate Regime Classification and use the most basic measure of the exchange rate regime employed in Shambaugh (2004). <https://www2.gwu.edu/~iiep/about/faculty/jshambaugh/Shambaughexchangerate.pdf> provides further details on the construction of the dataset.

<sup>29</sup> The base countries for pegs are obvious; the base for nonpegs, while conceivably difficult to isolate, are in fact almost equally obvious. Most countries generally only peg to one country during the sample and nearly all peg at some point, thus revealing the base. Further, those that do switch bases, tend to switch directly from one peg to another (e.g., Ireland in 1979), so no ambiguous middle float exists. For the few countries that do not peg, currency history is used and the dollar in very rare cases (Japan) where no obvious other choice exists. After the introduction of the euro, all euro-zone countries in our sample are treated as pegged to each other.

four binary dummy variables that codify the tabulation of restrictions on cross-border financial transactions reported in the IMF’s Annual Report on Exchange Arrangements and Exchange Restrictions: (i) capital account openness; (ii) current account openness; (iii) the stringency of requirements for the repatriation or surrender of export proceeds; and (iv) the existence of multiple exchange rates for capital account transactions.

Figure 7 reports the financial spillover effects of U.S. fiscal shocks across recipient countries, depending on their exchange rate regime. If anything, the results suggest that the response tends to be smaller in countries with currencies pegged to the USD, although the standard errors for the pegged recipient countries are fairly large,<sup>30</sup> leaving the difference of the effects between the two groups statistically insignificant. In this regard, this finding is consistent with Rey (2015), who argues that cross-border financial spillovers are *similar* for fixed and flexible exchange rate countries—implying the irrelevance of the exchange rate regime for cross-border financial spillovers.

Figure 8 presents the results for the capital account openness. Consistent with Ostry et al. (2010), the effect is smaller for countries with a relatively low degree of capital openness, indicating that capital controls can dampen cross-border financial spillovers of fiscal shocks. Lastly, we test whether the spillovers differ depending on the level of development of a recipient country: advanced vs. emerging market economies.<sup>31</sup> Interestingly, the difference in the impulse response functions between advanced- and emerging market-recipient economies (shown in Figure B.9) is similar to that between financially open and closed-counterpart countries in Figure 8. Indeed, the degree of capital openness of each country is strongly correlated with its income status, highlighting an empirical difficulty of separating these two channels.

Lastly, we consider the role of a recipient country’s reliance on dollar funding in characterizing the cross-border effects of U.S. fiscal shocks. Although a bulk of cross-border bank flows are denominated in USD, there exists substantial heterogeneity in terms of the reliance on dollar funding. To the extent to which a given recipient country relies more on the dollar, the spillover effect of U.S. fiscal shock is likely to be larger. Using BIS LBS data disaggregated by the currency in denomination, we compute the share of dollar-denominated cross-border liabilities in total cross-border liabilities for

---

<sup>30</sup> Only a quarter of recipient country-time observations are classified as a pegged regime.

<sup>31</sup> The classification of counties in advanced and merging market economies follows the IMF World Economic Outlook.

each country.<sup>32</sup> We estimate equation (5) using an alternative dummy variable taking a value of one (zero) if the dollar funding share is above (below) the median. Unlike the dummy variable characterizing the exchange rate regime or degree of capital controls, U.S. fiscal shocks can directly affect this variable. Thus, we take the lagged value of the dummy variable to alleviate the concern about reverse causality. The results presented in Figure 9 confirm that the cross-border spillover effect of U.S. fiscal shocks is larger when a recipient country relies more on dollar funding.

## **B. Analysis of Cross-border Fiscal-Financial Spillovers in Small Open Economies**

We test whether the financial spillover effect of domestic fiscal shocks in the United States can be generalized to a group of 16 (small open) advanced economies. While the textbook theory predicts a stark difference between closed and open economies regarding the effect of fiscal expansion on domestic economic variables, such as the interest rate, private investment, the exchange rate, and net exports, the impact on cross-border fiscal-financial spillovers falls into an area of empirical questions.

In the baseline analysis, we estimate equation (1) using the bilateral cross-border banking data between 16 source countries and their (maximum of) 49 recipient countries and the semi-annual data of exogenous government spending shocks constructed by Auerbach and Gorodnichenko (2012). In the baseline analysis, we use two lags of control variables in  $X_{i,j,t}$ . Our baseline estimation covers an unbalanced panel of 624 source-recipient country pairs from 1990 to 2010.

Figure A.5 in the online appendix A plots the distribution of exogenous government spending shocks in 16 OECD countries, showing that positive and negative exogenous spending shocks exist nearly equally in the data. Table 2 shows the average size and standard deviation of country-specific exogenous spending shocks, together with the correlation with U.S. exogenous spending shocks. The size of exogenous spending shocks—measured by the standard deviation—is quite similar across countries, while the correlation with U.S. fiscal shocks is heterogeneous—ranging from -0.445 in the United Kingdom to 0.413 in Denmark—, suggesting an idiosyncratic nature of the identified shocks.

**Baseline results.** Figure 10 shows the response of cross-border lending to these exogenous spending shocks. Consistent with the U.S. evidence, we find positive and significant effects of an exogenous increase in government spending on cross-border bank lending in the case of 16 OECD countries. One

---

<sup>32</sup> The average dollar funding share is 0.57 and its standard deviation is 0.21, confirming substantial heterogeneity. The dollar share is higher in emerging market economies (0.63) than advanced economies (0.48). The dollar funding share is also higher in the sample of floaters (0.58) than peggers (0.47).

percent of GDP increase in exogenous government spending leads to an about 4 percent increase in cross-border bank lending after one year, suggesting that the effect of fiscal-financial spillovers is not only statistically but also economically significant among small open economies. However, one should note that the nature and the size of AG's fiscal shocks differ from those of RZ's fiscal shocks. As shown in Table 2, the typical AG's spending shock among 16 OECD countries is much smaller than RZ's spending shocks.

**Robustness checks.** We check the role of the various fixed effects in estimating the above impulse response functions by re-estimating the equation with (i) the source-recipient fixed effect only and (ii) the recipient-time fixed effect only. Figure B.10 in the appendix shows that an increase in cross-border bank lending is very robust to the different combination of the fixed effects. Similar to the analysis of U.S. fiscal shocks, we conduct the following sensitivity tests: (i) controlling for other domestic macroeconomic variables, such as real GDP growth, stock market growth, the CPI inflation rate, the monetary policy rate, and nominal exchange rate growth; (ii) alternative standard error clustering; (iii) including more lags; (iv) estimation in levels; and (v) controlling for bilateral import growth. Our findings are largely unaffected by these alternative specifications, and the results are available upon request.

**Additional exercises.** We also investigate potential nonlinearities in international fiscal-financial spillovers by estimating bilateral versions of nonlinear equations (4) and (5) in turn. Following Auerbach and Gorodnichenko (2012), we use 1.5 years moving average of real GDP growth to construct  $z_{i,t}$ , a country-specific indicator of the state of the economy in the case of semi-annual international panel data. Again, we trace the coefficients  $\beta_E^h$  and  $\beta_R^h$  to measure the dynamic response to fiscal shocks when the economy is in recessions and expansions, respectively. Figure B.11 in the appendix contrasts the dynamic responses during recessions and expansions using AG shocks, which shares a similar pattern found in the analysis of the U.S. economy using RZ shocks: the positive spillovers are stronger during recessions than expansions. Nevertheless, we cannot provide a definite answer due to the large confidence intervals surrounding the estimates

Figure B.12 also confirms the finding from the analysis of the U.S. economy where the negative effect of fiscal consolidation on cross-border bank lending is larger than the positive effect of the same size of fiscal expansion in an absolute term. To the extent that most countries in this sample are European countries, this finding corroborates the concerns over the negative cross-border spillovers to their trading partners by recent fiscal consolidations adopted by many European economies (Goujard,



2017). Our contribution is to highlight financial linkages as a transmission channel, in addition to trade linkages emphasized in the previous studies.

Figures B.13 and B.14 report the results from estimating the small open economies counterpart to the results from the U.S. economy presented in Figures 7 and 8. The specification we use here mirrors the earlier ones. In Figure B.13, the large standard errors do not provide us clear-cut evidence on the role of the recipient countries' exchange rate regime. Figure B.14 presents the results for capital account openness. In this case, the effects are not statistically different between countries with a relatively high and low degree of capital account openness. While it may seem odd that even countries with relatively high capital controls are affected by changes in foreign fiscal policies, it is also the case that only a few countries with capital controls truly shut off access to capital markets.

## V. CONCLUSION

The Global Financial Crisis re-ignited the debate on the role of fiscal policy as a key stabilization tool and on the potential of fiscal policy to affect economic activity in other economies through cross-border spillovers. To what extent fiscal policy spills over into other countries is a key question in the current context of fiscal expansion in large and systemic economies such as the United States. While previous studies have typically analyzed the existence of fiscal spillovers through trade linkages, less is known about the magnitude of fiscal spillovers through financial linkages. This paper contributes to this literature by providing the first analysis—to the best of our knowledge—of the international financial spillovers of domestic fiscal shocks via cross-border bank flows. Our analysis on both gross flows and net flows also allows us to identify a potential source of current account improvement following an expansionary fiscal shock, thereby contributing to the emerging literature emphasizing gross capital flows as a new determinant of global financial stability (Obstfeld, 2012; Broner et al., 2013).

By investigating the cross-border spillovers of exogenous fiscal shocks in both the United States and 16 other advanced economies, we document that fiscal policy in a source economy has economically and statistically significant effects on cross-border bank lending to other economies, and these effects are largely independent of bilateral trade flows. Overall, the strength of the spillovers is larger when a fiscal expansion in source countries is undertaken during periods of weak economic activity. In addition, the effect of fiscal consolidation is typically larger than that of the same-magnitude in fiscal expansion. These results suggest that the coordination of fiscal policies is more valuable than previously thought. While monetary accommodation following a fiscal expansion appears to amplify

the positive spillover effects, fiscal policy shocks are still an independent driver of cross-border bank lending.

The results of the paper also speak to the policy debate on the ability of recipient economies to dampen capital inflows, thereby mitigating potential negative externalities. We find some suggestive evidence that capital controls are effective in moderating capital inflows, although no definitive statements can be made due to large standard errors. We also find that the degree of fiscal-financial spillovers is not significantly different depending on a recipient country's exchange rate regime, suggesting—as argued by Rey (2015)—that the exchange rate regime is mostly irrelevant for cross-border financial spillovers.

## References

- Albrizio, Silvia, Sangyup Choi, Davide Furceri, and Chansik Yoon. "International bank lending channel of monetary policy." *Journal of International Money and Finance* 102 (2020): 102124.
- Auerbach, Alan J., and Yuriy Gorodnichenko. "Fiscal multipliers in recession and expansion." *Fiscal policy after the financial crisis*. University of Chicago Press, 2012. 63-98.
- Auerbach, Alan J., and Yuriy Gorodnichenko. "Output spillovers from fiscal policy." *American Economic Review* 103.3 (2013): 141-46.
- Avdjiev, Stefan, and Galina Hale. "US monetary policy and fluctuations of international bank lending." *Federal Reserve Bank of San Francisco*, 2018.
- Baker, Scott R., Nicholas Bloom, and Steven J. Davis. "Measuring economic policy uncertainty." *Quarterly Journal of Economics* 131.4 (2016): 1593-1636.
- Bank of International Settlement. "BIS Quarterly Review." 2017
- Baskaya, Yusuf Soner, Julian Di Giovanni, Şebnem Kalemli-Özcan, José-Luis Peydro, and Mehmet Fatih Ulu. "Capital flows and the international credit channel." *Journal of International Economics* 108 (2017): S15-S22.
- Beetsma, Roel, Massimo Giuliadori, and Franc Klaassen. "The effects of public spending shocks on trade balances and budget deficits in the European Union." *Journal of the European Economic Association* 6.2-3 (2008): 414-423.
- Bersvendsen, Tore, and Jan Ditzen. "xthst: Testing for slope homogeneity in Stata." *Stata Journal* (forthcoming).
- Blanchard, Olivier, and Roberto Perotti. "An empirical characterization of the dynamic effects of changes in government spending and taxes on output." *Quarterly Journal of Economics* 117.4 (2002): 1329-1368.
- Blanchard, Olivier, Christopher J. Erceg and Jesper Lindé, 2017. "Jump-Starting the Euro-Area Recovery: Would a Rise in Core Fiscal Spending Help the Periphery?" *NBER Macroeconomics Annual*, University of Chicago Press, vol. 31(1), pages 103-182.
- Broner, Fernando, Tatiana Didier, Aitor Erce, and Sergio L. Schmukler. "Gross capital flows: Dynamics and crises." *Journal of Monetary Economics* 60, no. 1 (2013): 113-133.
- Bruno, Valentina, and Hyun Song Shin. "Cross-border banking and global liquidity." *Review of Economic Studies* 82.2 (2015a): 535-564.
- Bruno, Valentina, and Hyun Song Shin. "Capital flows and the risk-taking channel of monetary policy." *Journal of Monetary Economics* 71 (2015b): 119-132.

- Caggiano, G., Castelnuovo, E., Colombo, V., & Nodari, G. (2015). "Estimating Fiscal Multipliers: News from a Non-linear World." *Economic Journal*, 125(584), 746-776.
- Cetorelli, Nicola, and Linda S. Goldberg. "Global banks and international shock transmission: Evidence from the crisis." *IMF Economic Review* 59.1 (2011): 41-76.
- Cerutti, Eugenio, Stijn Claessens, and Lev Ratnovski. "Global liquidity and cross-border bank flows." *Economic Policy* 32.89 (2017): 81-125.
- Chinn, Menzie D., and Hiro Ito. "A new measure of financial openness." *Journal of Comparative Policy Analysis* 10.3 (2008): 309-322.
- Choi, Sangyup, and Davide Furceri. "Uncertainty and cross-border banking flows." *Journal of International Money and Finance* 93 (2019): 260-274.
- Choi, Sangyup, and Junhyeok Shin. "Household indebtedness and the macroeconomic effects of tax changes." *Mimeo* (2020).
- Coenen G, Erceg CJ, Freedman C, Furceri D, Kumhof M, Lalonde R, Laxton D, Lindé J, Mourougane A, Muir D, Mursula S. "Effects of fiscal stimulus in structural models." *American Economic Journal: Macroeconomics*. 2012 Jan; 4(1):22-68.
- Coibion, Olivier. "Are the effects of monetary policy shocks big or small?" *American Economic Journal: Macroeconomics* 4.2 (2012): 1-32.
- Correa, Ricardo, Teodora Paligorova, Horacio Saprizza, and Andrei Zlate. "Cross-Border Bank Flows and Monetary Policy." *Working Paper* 2017.
- Corsetti, Giancarlo, André Meier, and Gernot J. Müller. "Fiscal stimulus with spending reversals." *Review of Economics and Statistics* 94.4 (2012): 878-895.
- Dabla-Norris, E., E.P. Dallari, and T. Poghosyan. "Fiscal Spillovers in the Euro Area: Letting the Data Speak", *IMF Working Paper* (2017): 17/241.
- Davig, Troy, and Eric M. Leeper. "Monetary–fiscal policy interactions and fiscal stimulus." *European Economic Review* 55.2 (2011): 211-227.
- DeLong, J. Bradford, and Lawrence H. Summers. "Fiscal policy in a depressed economy." *Brookings Papers on Economic Activity* 2012.1 (2012): 233-297.
- Driscoll, John C., and Aart C. Kraay. "Consistent covariance matrix estimation with spatially dependent panel data." *Review of Economics and Statistics* 80.4 (1998): 549-560.
- Eggertsson, Gauti B. "What fiscal policy is effective at zero interest rates?" *NBER Macroeconomics Annual* 25.1 (2011): 59-112.

Enders, Zeno, Gernot J. Müller, and Almuth Scholl. "How do fiscal and technology shocks affect real exchange rates?: New evidence for the United States." *Journal of International Economics* 83.1 (2011): 53-69.

Faccini, Renato, Haroon Mumtaz, and Paolo Surico. "International fiscal spillovers." *Journal of International Economics* 99 (2016): 31-45.

Farhi, Emmanuel, and Iván Werning. "Fiscal Multipliers: Liquidity Traps and Currency Unions." *Handbook of Macroeconomics*. Vol. 2. Elsevier, 2016. 2417-2492.

Feyrer, James, and Jay Shambaugh. "Global savings and global investment: The transmission of identified fiscal shocks." *American Economic Journal: Economic Policy* 4.2 (2012): 95-114.

Forbes, Kristin J., and Francis E. Warnock. "Capital flow waves: Surges, stops, flight, and retrenchment." *Journal of International Economics* 88.2 (2012): 235-251.

Goujard, Antoine. "Cross-Country Spillovers from Fiscal Consolidations." *Fiscal Studies* 38.2 (2017): 219-267.

Granger, Clive, and Timo Teräsvirta. "Modelling Non-Linear Economic Relationships." Oxford University Press, 1993.

Hahm, Joon-ho, Hyun Song Shin, and Kwanho Shin. "Noncore bank liabilities and financial vulnerability." *Journal of Money, Credit and Banking* 45.1 (2013): 3-36.

Ilzetzki, Ethan, Enrique G. Mendoza, and Carlos A. Végh. "How big (small?) are fiscal multipliers?" *Journal of Monetary Economics* 60.2 (2013): 239-254.

International Monetary Fund. "Dancing Together? Spillovers, Common Shocks, and the Role of Financial and Trade Linkages." *IMF World Economic Outlook*, 2013.

International Monetary Fund. "Fiscal Spillovers: The Importance of Macroeconomic and Policy Conditions in Transmission." *IMF Spillover Notes*, 2017.

Jordà, Òscar. "Estimation and inference of impulse responses by local projections." *American Economic Review* 95.1 (2005): 161-182.

Kalemli-Ozcan, Sebnem, Elias Papaioannou, and Fabrizio Perri. "Global banks and crisis transmission." *Journal of International Economics* 89.2 (2013): 495-510.

Kim, Soyoung. "Country characteristics and the effects of government consumption shocks on the current account and real exchange rate." *Journal of International Economics* 97.2 (2015): 436-447.

Kim, Soyoung, and Nouriel Roubini. "Twin deficit or twin divergence? Fiscal policy, current account, and real exchange rate in the US." *Journal of International Economics* 74.2 (2008): 362-383.

- Leeper, Eric M., Todd B. Walker, and Shu-Chun Susan Yang. "Fiscal foresight and information flows." *Econometrica* 81.3 (2013): 1115-1145.
- Milesi-Ferretti, Gian-Maria, and Cédric Tille. "The great retrenchment: international capital flows during the global financial crisis." *Economic Policy* 26.66 (2011): 289-346.
- Miyamoto, Wataru, Thuy Lan Nguyen, and Viacheslav Sheremirov. "The effects of government spending on real exchange rates: evidence from military spending panel data." (2017).
- Mountford, Andrew, and Harald Uhlig. "What are the effects of fiscal policy shocks?" *Journal of Applied Econometrics* 24.6 (2009): 960-992.
- Mundell, R., "Capital Mobility and Stabilization Policy under Fixed and Flexible Exchange Rates," *Canadian Journal of Economics and Political Science* 29 (1963), 475-485.
- Nicar, Stephen B. "International spillovers from US fiscal policy shocks." *Open Economies Review* 26, no. 5 (2015): 1081-1097.
- Obstfeld, Maurice. "Financial flows, financial crises, and global imbalances." *Journal of International Money and Finance* 31.3 (2012): 469-480.
- Obstfeld, M., J. Shambaugh, and A. Taylor, "The Trilemma in History: Tradeoffs among Exchange Rates, Monetary Policies, and Capital Mobility," *Review of Economics and Statistics* 87 (2005), 423-438.
- Ostry, Jonathan D., Atish R. Ghosh, Karl Friedrich Habermeier, Marcos Chamon, Mahvash Qureshi, and Dennis B. S. Reinhardt. 2010. "Capital Inflows; The Role of Controls." IMF Staff Position Notes. International Monetary Fund.
- Perotti, Roberto. "Fiscal policy in good times and bad." *Quarterly Journal of Economics* 114.4 (1999): 1399-1436.
- Pesaran, M. Hashem, and Takashi Yamagata. "Testing slope homogeneity in large panels." *Journal of Econometrics* 142, no. 1 (2008): 50-93.
- Ramey, Valerie A. "Can government purchases stimulate the economy?" *Journal of Economic Literature* 49.3 (2011): 673-85.
- Ramey, Valerie A., and Sarah Zubairy. "Government spending multipliers in good times and in bad: evidence from US historical data." *Journal of Political Economy* 126.2 (2018): 850-901.
- Ravn, Morten O., Stephanie Schmitt-Grohé, and Martin Uribe. "Consumption, government spending, and the real exchange rate." *Journal of Monetary Economics* 59.3 (2012): 215-234.
- Rey, H., "Dilemma not Trilemma: The Global Financial Cycle and Monetary Policy Independence," NBER Working Paper 21162 (2015).

Romer, Christina D., and David H. Romer. "A new measure of monetary shocks: Derivation and implications." *American Economic Review* 94.4 (2004): 1055-1084.

Romer, Christina D., and David H. Romer. "The macroeconomic effects of tax changes: estimates based on a new measure of fiscal shocks." *American Economic Review* 100.3 (2010): 763-801.

Shambaugh, Jay C. "The effect of fixed exchange rates on monetary policy." *Quarterly Journal of Economics* 119.1 (2004): 301-352.

Wu, Jing Cynthia, and Fan Dora Xia. "Measuring the macroeconomic impact of monetary policy at the zero lower bound." *Journal of Money, Credit and Banking* 48.2-3 (2016): 253-291.

**Tables and figures**

**Table 1.** Baseline estimation results from a dynamic framework

A) Results using RZ spending shocks

	h=0	h=1	h=2	h=3	h=4	h=5	h=6	h=7
Log cross-border claims (-1)	-0.206*** (0.029)	-0.259*** (0.030)	-0.307*** (0.035)	-0.251*** (0.029)	-0.271*** (0.036)	-0.346*** (0.039)	-0.394*** (0.039)	-0.347*** (0.035)
Log cross-border claims (-2)	0.104*** (0.025)	0.086** (0.036)	0.175*** (0.039)	0.121*** (0.039)	0.098** (0.041)	0.079 (0.049)	0.183*** (0.049)	0.105** (0.040)
Fiscal shock	2.581*** (0.485)	2.272*** (0.585)	3.271*** (0.712)	1.895 (1.187)	1.156 (1.521)	0.836 (1.439)	1.731 (2.484)	0.783 (2.407)
Fiscal shock (-1)	0.874 (0.564)	1.617** (0.659)	-0.005 (1.019)	-0.481 (1.525)	-0.861 (1.521)	0.208 (2.403)	0.421 (1.921)	0.703 (2.076)
Fiscal shock (-2)	0.660 (0.493)	-0.381 (0.535)	-1.311 (1.036)	-1.448 (1.314)	-1.02 (2.048)	-1.415 (1.829)	-0.123 (2.170)	-0.943 (2.145)
Recipient GDP growth	0.765** (0.307)	0.544 (0.451)	1.083** (0.472)	1.416** (0.626)	1.393** (0.684)	2.020*** (0.755)	2.249** (0.859)	1.700* (0.917)
Recipient GDP growth (-1)	-0.051 (0.331)	0.521 (0.373)	0.638 (0.506)	0.428 (0.543)	1.218* (0.661)	1.487* (0.755)	0.942 (0.822)	1.357* (0.788)
Recipient GDP growth (-2)	0.411 (0.277)	0.970** (0.374)	0.745 (0.497)	1.322** (0.627)	1.577** (0.691)	1.077 (0.721)	1.216 (0.803)	1.745** (0.740)
Recipient interest rate	-0.074*** (0.022)	-0.095*** (0.031)	-0.122*** (0.044)	-0.132** (0.055)	-0.184*** (0.063)	-0.231*** (0.074)	-0.323*** (0.112)	-0.356** (0.144)
Recipient interest rate (-1)	-0.000** (0.000)	-0.002*** (0.000)	-0.001*** (0.000)	-0.002*** (0.000)	0.000 (0.000)	0.000 (0.000)	-0.001 (0.001)	0.000 (0.001)
Recipient interest rate (-2)	-0.002*** (0.000)	-0.001*** (0.000)	-0.002*** (0.000)	0.000 (0.000)	-0.001 (0.000)	-0.001*** (0.000)	0.000 (0.000)	-0.001* (0.001)
Obs	3,216	3,173	3,133	3,091	3,048	3,005	2,962	2,921
R-squared	0.082	0.0951	0.117	0.109	0.132	0.156	0.191	0.207
Recipient country fixed effect	Yes	Yes	Yes	Yes	Yes	Yes	Yes	Yes



B) Results using RR revenue shocks

	h=0	h=1	h=2	h=3	h=4	h=5	h=6	h=7
Log cross-border claims (-1)	-0.233*** (0.029)	-0.209*** (0.027)	-0.301*** (0.040)	-0.234*** (0.031)	-0.260*** (0.035)	-0.308*** (0.042)	-0.332*** (0.034)	-0.267*** (0.037)
Log cross-border claims (-2)	0.144*** (0.028)	0.051*** (0.024)	0.198*** (0.038)	0.146*** (0.038)	0.149*** (0.042)	0.088* (0.051)	0.162*** (0.036)	0.038 (0.053)
Fiscal shock	4.068** (1.569)	3.400 (3.200)	5.151* (3.102)	5.577 (4.556)	5.588* (3.021)	1.291 (3.799)	2.674 (3.880)	2.869 (6.439)
Fiscal shock (-1)	2.449 (2.634)	2.698 (2.757)	2.495 (3.954)	0.642 (2.580)	-0.023 (2.826)	-0.554 (3.333)	-1.513 (5.326)	0.487 (5.909)
Fiscal shock (-2)	1.203 (2.044)	1.256 (2.157)	-1.553 (2.560)	0.168 (2.740)	-2.819 (2.690)	0.26 (4.902)	-1.956 (4.540)	-3.283 (5.322)
Recipient GDP growth	0.184 (0.303)	-0.368 (0.496)	0.306 (0.451)	0.792 (0.536)	0.649 (0.615)	1.018 (0.663)	1.459** (0.734)	1.083 (0.812)
Recipient GDP growth (-1)	-0.263 (0.339)	0.195 (0.386)	0.462 (0.480)	0.365 (0.458)	0.863* (0.497)	1.275** (0.565)	0.959* (0.572)	1.068 (0.691)
Recipient GDP growth (-2)	0.477 (0.295)	0.906** (0.392)	0.846 (0.519)	1.237** (0.538)	1.817*** (0.549)	1.493*** (0.549)	1.541** (0.636)	2.194*** (0.614)
Recipient interest rate	-0.082*** (0.025)	-0.104*** (0.039)	-0.127*** (0.048)	-0.132** (0.054)	-0.199*** (0.076)	-0.236*** (0.088)	-0.322** (0.131)	-0.367** (0.175)
Recipient interest rate (-1)	-0.000** (0.000)	-0.002*** (0.000)	-0.001*** (0.000)	-0.001*** (0.000)	0.000 (0.000)	0.000 (0.000)	0.000 (0.001)	0.000 (0.001)
Recipient interest rate (-2)	-0.001*** (0.000)	-0.001*** (0.000)	-0.001*** (0.000)	0.000 (0.000)	0.000 (0.000)	0.000 (0.000)	0.000 (0.000)	0.000 (0.001)
Obs	2,746	2,747	2,749	2,747	2,745	2,744	2,738	2,741
R-squared	0.085	0.075	0.104	0.098	0.109	0.123	0.152	0.148
Recipient country fixed effect	Yes	Yes	Yes	Yes	Yes	Yes	Yes	Yes

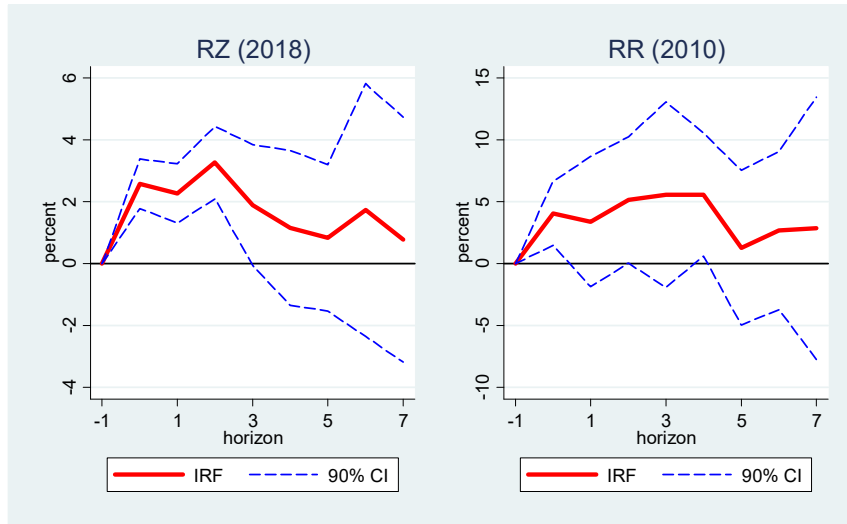
Note: Estimates are based on equation (2). The coefficients are multiplied by 100 to ease interpretation except for the lagged dependent variables. Autocorrelation and heteroskedasticity-consistent standard errors are clustered at the time levels. \*\*\* denotes 1% significant level, \*\* denotes 5% significance level, and \* denotes 10% significance level. To save space, we only report the estimation results for the first two lags out of the four lags used in the estimation.

**Table 2.** Summary of exogenous spending shocks in 16 OECD countries: 1990-2010

Source country	Mean	Standard deviation	Correlation with U.S. shocks	Obs
Australia	-0.004	0.189	0.083	29
Austria	0.001	0.240	-0.012	17
Belgium	0.002	0.089	0.237	29
Canada	-0.043	0.174	-0.059	41
Denmark	0.001	0.185	0.413	28
Finland	0.001	0.214	0.349	29
Germany	0.013	0.186	-0.346	41
Italy	0.010	0.124	0.348	40
Japan	0.010	0.123	-0.047	41
Korea	-0.009	0.206	0.029	28
Mexico	-0.008	0.279	-0.144	29
Netherlands	-0.002	0.214	0.043	29
Portugal	-0.003	0.144	-0.252	29
Spain	-0.004	0.163	-0.056	29
Sweden	0.000	0.331	-0.045	29
United Kingdom	-0.014	0.241	-0.445	41
United States	0.003	0.132	1	41

Note: The exogenous spending shocks are taken from Auerbach and Gorodnichenko (2012b) and normalized by the lagged nominal GDP.

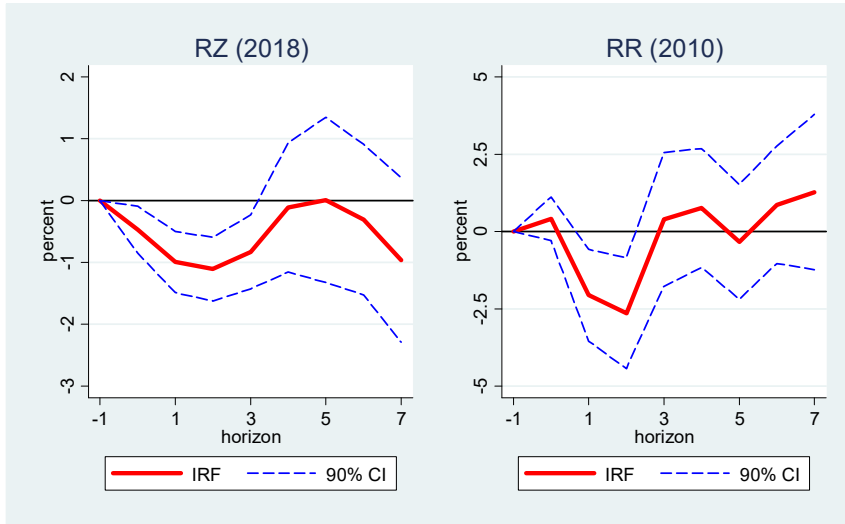
**Figure 1.** Estimated effect of a U.S. expansionary fiscal policy shock (1 percent of GDP) on cross-border bank lending



Note: The left panel shows the response of cross-border bank lending to a U.S. expansionary fiscal policy shock (1 percent of GDP) using exogenous government spending shocks from Ramey and Zubairy (2018), while the right panel shows the response to exogenous tax shocks from Romer and Romer (2010). Horizon  $h=0$  captures the impact of the shock, and the units are in percentage.

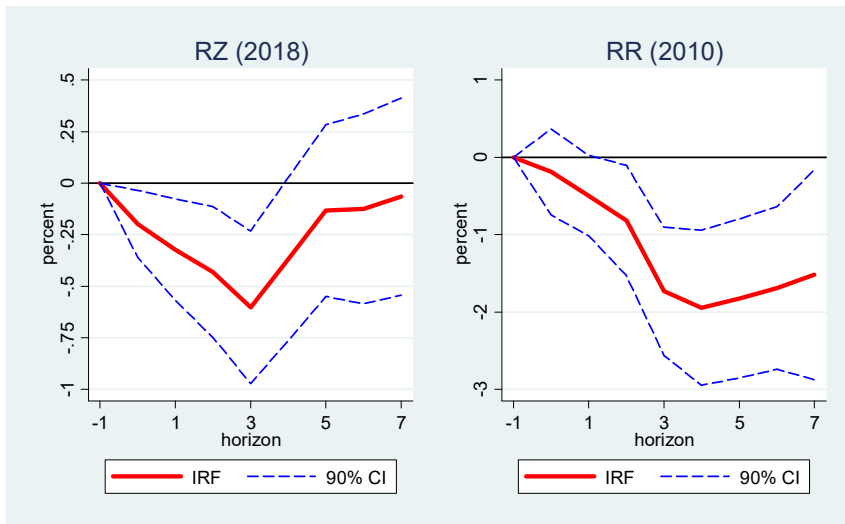
**Figure 2.** Transmission channel of U.S. fiscal shocks

A) Response of the real effective exchange rate to the fiscal shock



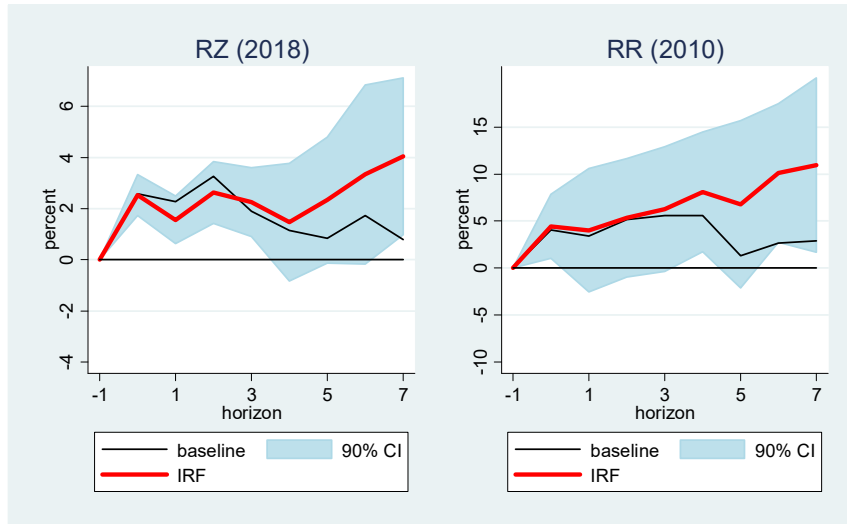
Note: The left panel shows the response of the real effective exchange rate to a U.S. expansionary fiscal policy shock (1 percent of GDP) using exogenous government spending shocks from Ramey and Zubairy (2018), while the right panel shows the response to exogenous tax shocks from Romer and Romer (2010). Horizon  $h=0$  captures the impact of the shock, and the units are in percentage.

B) Response of the real interest rate to the fiscal shock



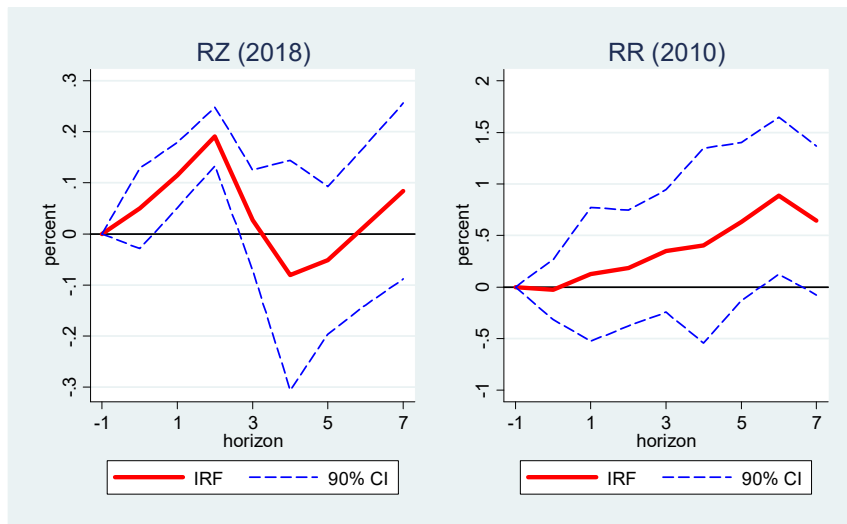
Note: The left panel shows the response of the real interest rate to a U.S. expansionary fiscal policy shock (1 percent of GDP) using exogenous government spending shocks from Ramey and Zubairy (2018), while the right panel shows the response to exogenous tax shocks from Romer and Romer (2010). Horizon  $h=0$  captures the impact of the shock, and the units are in percentage.

**Figure 3.** Estimated effect of a U.S. expansionary fiscal policy shock (1 percent of GDP) on cross-border bank lending after controlling for monetary policy shocks and VIX shocks



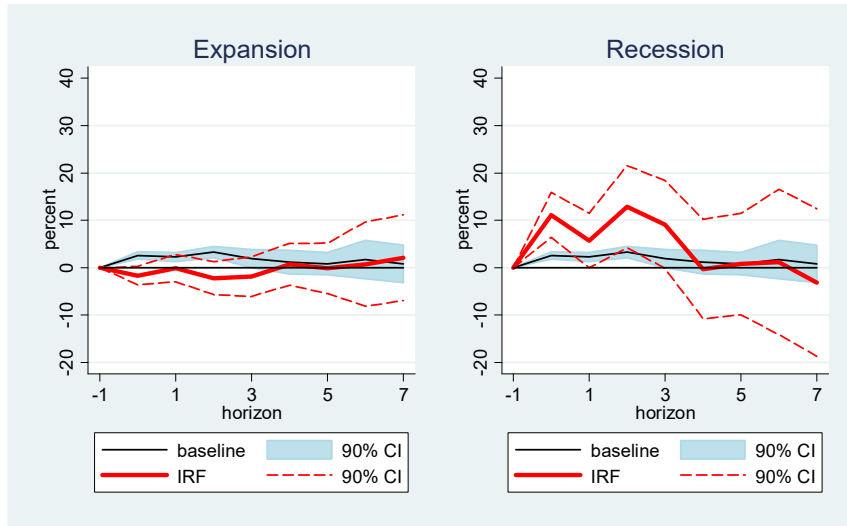
Note: The left panel shows the response of cross-border bank lending to a U.S. expansionary fiscal policy shock (1 percent of GDP) using exogenous government spending shocks from Ramey and Zubairy (2018) after controlling for monetary policy shocks constructed by Coibion (2012) who extends the narrative approach by Romer and Romer (2004), while the right panel shows the response to exogenous tax shocks from Romer and Romer (2010). Horizon  $h=0$  captures the impact of the shock, and the units are in percentage.

**Figure 4.** Estimated effect of a U.S. expansionary fiscal policy shock (1 percent of GDP) on cross-border bank net lending



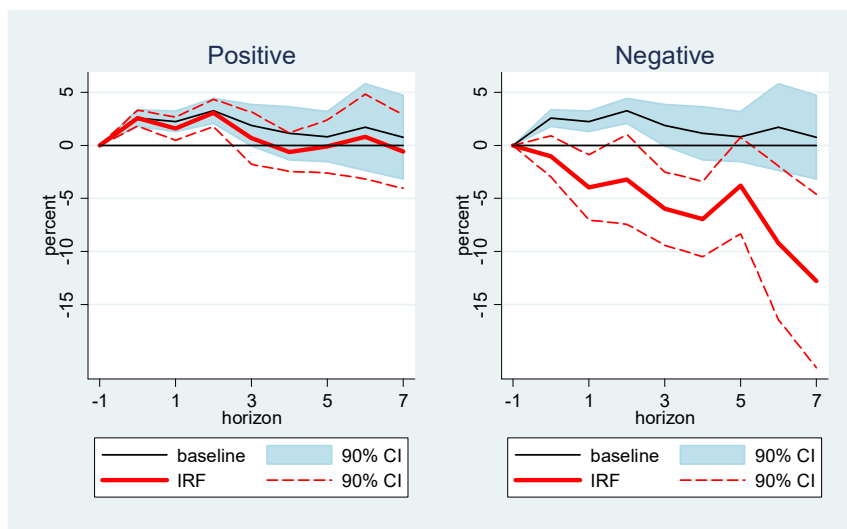
Note: The left panel shows the response of cross-border bank net lending to a U.S. expansionary fiscal policy shock (1 percent of GDP) using exogenous government spending shocks from Ramey and Zubairy (2018), while the right panel shows the response to exogenous tax shocks from Romer and Romer (2010). Horizon  $h=0$  captures the impact of the shock, and the units are in percentage.

**Figure 5.** Estimated effect of a U.S. expansionary fiscal policy shock (1 percent of GDP) on cross-border bank lending: expansions vs. recessions



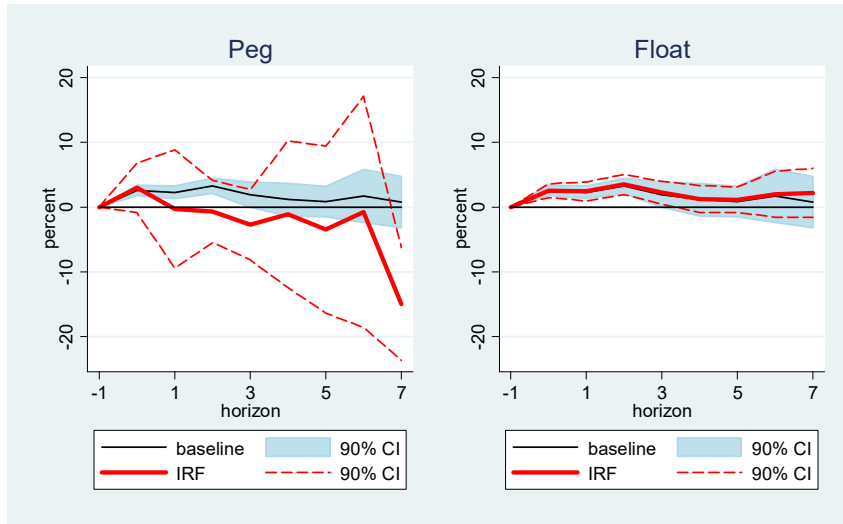
Note: The left (right) panel shows the response of cross-border bank lending to exogenous government spending shocks from Ramey and Zubairy (2018) during expansions (recessions). Horizon  $h=0$  captures the impact of the shock, and the units are in percentage.

**Figure 6.** Estimated effect of a U.S. expansionary fiscal policy shock (1 percent of GDP) on cross-border bank lending: expansionary vs. contractionary shocks



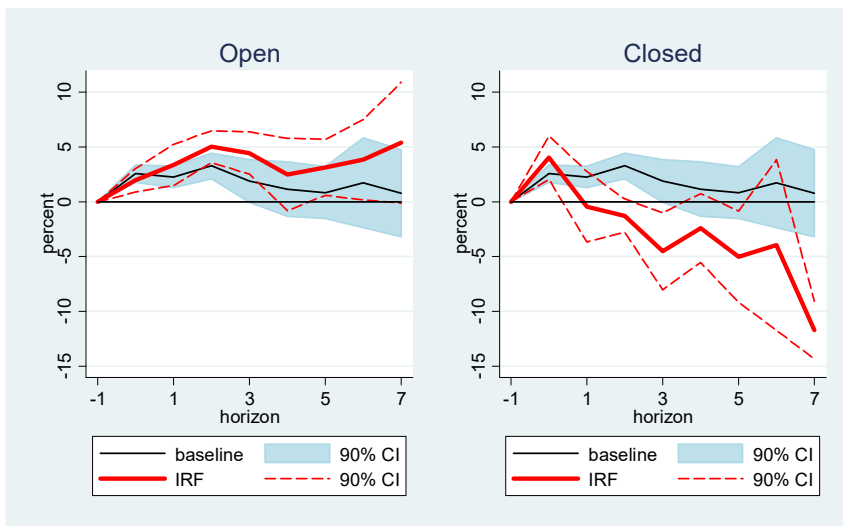
Note: The left (right) panel shows the response of cross-border bank lending to expansionary (contractionary) exogenous government spending shocks from Ramey and Zubairy (2018). Horizon  $h=0$  captures the impact of the shock, and the units are in percentage. The sign of the response to contractionary shocks is adjusted so that the response is negative in this case.

**Figure 7.** Estimated effect of a U.S. expansionary fiscal policy shock (1 percent of GDP) on cross-border bank lending: pegged vs. non-pegged recipients



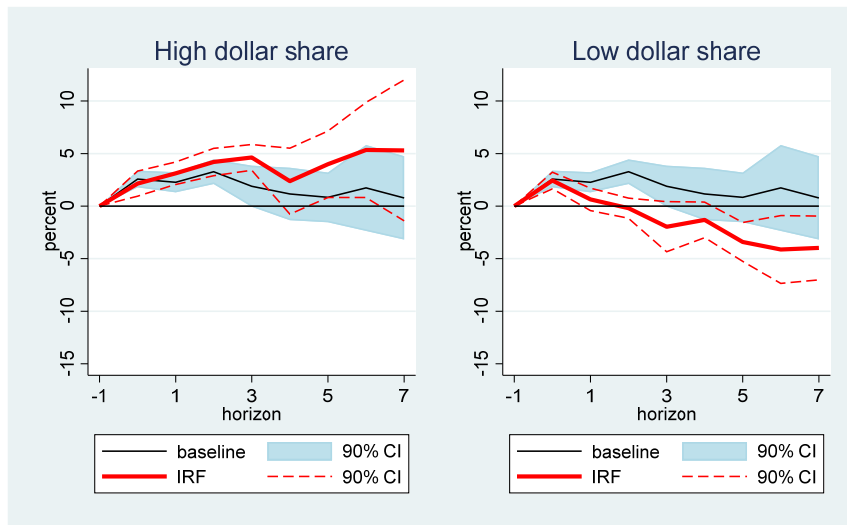
Note: The left (right) panel shows the response of cross-border bank lending to exogenous government spending shocks from Ramey and Zubairy (2018) when the recipient country is pegged (non-pegged). Horizon  $h=0$  captures the impact of the shock, and the units are in percentage.

**Figure 8.** Estimated effect of a U.S. expansionary fiscal policy shock (1 percent of GDP) on cross-border bank lending: financially open vs. closed recipient countries



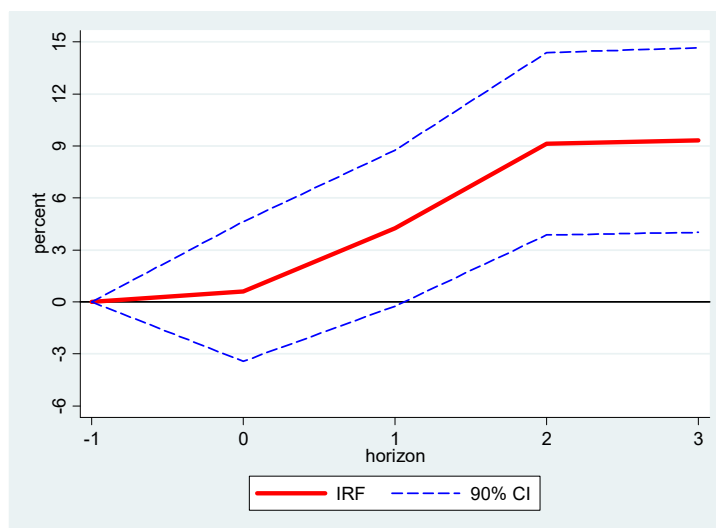
Note: The left (right) panel shows the response of cross-border bank lending to exogenous government spending shocks from Ramey and Zubairy (2018) when the recipient country is financially open (closed). Horizon  $h=0$  captures the impact of the shock, and the units are in percentage.

**Figure 9.** Estimated effect of a U.S. expansionary fiscal policy shock (1 percent of GDP) on cross-border bank lending: high vs. low dollar dependence



Note: The left (right) panel shows the response of cross-border bank lending to exogenous government spending shocks from Ramey and Zubairy (2018) when the dependence of the recipient country on dollar funding is high (low). Horizon  $h=0$  captures the impact of the shock, and the units are in percentage.

**Figure 10.** Estimated effect of expansionary spending shock (1 percent of GDP) on cross-border bank lending using 16 OECD countries



Note: The graph shows the response of cross-border bank lending to exogenous government spending shocks from Auerbach and Gorodnichenko (2012b). Horizon  $h=0$  captures the impact of the shock, and the units are in percentage.



# Online Appendix for “International Fiscal-financial Spillovers: The Effect of Fiscal Shocks on Cross-border Bank Lending”

## Appendix A. Summary of the underlying data

*Cross-border banking data.* In Table A.1 in the online appendix, we summarize the data availability in the BIS International Banking Statistics by reproducing Table 1 in Avdjiev and Elod Takáts (2014). This summary highlights the available information for each statistic, together with their limitations. Table A.2 lists the final sample of reporting countries and their counterparties used in the panel analysis of small open economies, together with their average status regarding the exchange rate regime and capital openness during the sample period.<sup>33</sup> We use these country-specific characteristics to investigate factors affecting the international fiscal-financial spillovers.

The availability of a currency breakdown enables the BIS to calculate break- and exchange rate- adjusted changes in amounts outstanding. Such adjusted changes approximate underlying flows during each quarter. The adjusted change is calculated by first converting U.S. dollar-equivalent amounts outstanding into their original currency using end-of-period exchange rates, then calculating the difference in amounts outstanding in the original currency, and finally converting the difference into a U.S. dollar-equivalent change using average period exchange rates (Bank for International Settlements, 2017).<sup>34</sup> As the BIS LBS only report the exchange rate-adjusted flows, we construct the exchange rate-adjusted stock of the cross-border claims from a country  $i$  to a country  $j$  by adding the exchange rate-adjusted flows to the exchange rate-unadjusted claims—directly available from the BIS LBS—in the initial period. We construct the exchange rate-adjusted stock of the cross-border liabilities in the same manner.

We present the size of total cross-border claims and liabilities as a share of the GDP in 2010Q4 for the 17 reporting countries in Table A.2 to provide a first look at the data. Table A.2 demonstrates the dominance of advanced economies in shaping the cross-border banking system. When normalized to the size of domestic GDP, both cross-border claims and liabilities of emerging market economies

---

<sup>33</sup> For each country, we take the time-series average of each measure to summarize the overall characteristics during the sample period.

<sup>34</sup> Nevertheless, the adjustment practice by the BIS cannot eliminate the possibility of under- or overestimation of actual flows. Adjusted changes could still be affected by changes in valuations, writedowns, the underreporting of breaks, and differences between the exchange rate on the transaction date and the quarterly average exchange rate used for conversion (see Avdjiev and Hale, 2018 for further details).

are smaller than those of advanced economies almost by two orders of magnitude. For example, cross-border claims and liabilities in Mexico are only five and seven percent of the GDP, while they account for 640 and 380 percent of the GDP in the United Kingdom.

Such a large difference between advanced and emerging market economies is far greater than the difference in overall financial openness measured by the sum of total gross asset and liability positions as a share of the GDP (Obstfeld, 2012). The predominant role of European countries in the cross-border banking system is also apparent. European countries engage in cross-border banking much more heavily than the United States and other advanced economies relative to the size of the economies. While global banks operating in advanced economies have more cross-border claims than liabilities, this pattern is reversed in emerging market economies.

To provide a further look at the underlying dynamics, we plot aggregate cross-border claims of the United States in Figure A.1. We show both exchange rate-unadjusted and adjusted claims to demonstrate the importance of accounting for the valuation effect. Although they share a similar time-series pattern for the case of the United States (the correlation of 0.75), given that the lion's share of cross-border bank lending is denominated in the USD, it is not the case for other countries. In the sample of 16 OECD countries, the correlation between the growth rate of cross-border claims using two measures is only about 0.5, suggesting a non-negligible role of the valuation effect in these economies. Moreover, accounting for the valuation effect results in a more pronounced decline in cross-border bank lending from the United States during the GFC, suggesting that the appreciation of the USD during this period partially offsets a larger decline in "real" cross-border bank lending originally denominated in the USD.<sup>35</sup>

We further illustrate the bilateral structure of the data by presenting examples of bilateral cross-border claims between the United States and the other six countries in Figure A.2. Although we do not reveal the identity of individual counterparty countries, Figure A.2 shows some heterogeneity in the pattern of cross-border claims among different country pairs. The first four recipient countries are advanced economies, and the last two recipient countries are emerging market economies. First, the different scales of the y-axis in these graphs re-emphasizes the dominance of advanced economies in shaping these flows. Second, the pattern found in the lending towards emerging market economies is

---

<sup>35</sup> Although the United States experienced a large valuation loss in its net international investment position as an aggregate—suggesting that accounting for the valuation effect mitigates the decline in its net foreign asset position—, it is largely driven by a sharp fall in the prices of risky assets that the United States held in other countries. When it comes to cross-border banking, the adjustment through the exchange rate is a dominant factor of the valuation effect.

different from that in advanced economies. Third, even among advanced economies, the pattern of cross-border lending from the United States is quite heterogeneous, suggesting that a recipient country's characteristics could play an important role in shaping the cross-border fiscal-financial spillovers.

***Measures of exogenous U.S. fiscal shocks.*** As a baseline measure of U.S. fiscal shocks, we use 'defense news' shocks constructed by Ramey and Zubairy (2018), which are exogenous to business cycles and unpredictable with ex-ante information held by agents (RZ shocks, henceforth). These shocks are based on a narrative approach, which exploits information from the press (*Business Week*, *New York Times*, and *Washington Post*).

Under the benchmark neoclassical model in which the key effect of government spending operates through the wealth effect, RZ shocks measure the expected present discounted value of government spending changes due to foreign political events. The variable used as the shock is the nominal value divided by the one-quarter lag of nominal GDP. We use lagged GDP, as it is not affected by contemporaneous fiscal shocks.<sup>36</sup> The advantages of using RZ shocks are twofold. First, data are available at the quarterly frequency for a very extensive time sample (from 1889 to 2015). Second, the use of fiscal "news" ensures that the shocks are identified well before the spending takes place (or before they materialize in the NIPA accounts). This helps reduce the risk of endogeneity problems in the VAR analysis related to the presence of "fiscal foresight"—that is, the possibility that lags between the planning and the actual implementation of fiscal policy lead to anticipation of spending shocks (see Leeper et al., 2013 and Forni and Gambetti, 2016).

As a robustness test of our findings, we also use tax shocks identified by Romer and Romer (2010), limiting ourselves to the exogenous ones (RR shocks, henceforth). Similar to RZ shocks, they are also based on a narrative approach. Romer and Romer (2010) make use of narrative records, such as budget documents and speeches, to identify the size, timing, the principal motivation for fiscal actions, and to separate out tax changes that were made based on attempts to respond to current economic situations from those that are exogenous to current economic conditions. Exogenous tax changes are those that are not motivated by the objective to influence short-run conditions—such as counteracting influences on the economy or paying for increases in government spending—but those motivated by long-run goals—such as a desire to restore long-run budgetary balance or to spur long-run growth through lower marginal rates—or by a shift in government ideology.

---

<sup>36</sup> Empirical evidence also suggests that the impact of fiscal shocks on output is minor in the first three quarters after the shock (Romer and Romer, 2010).

RR shocks cover both expansion and consolidation episodes at a quarterly frequency from 1945 to 2007. Throughout the paper, we reverse the sign of RR shocks so that an increase in this measure indicates a tax cut, to make it consistent with the expansionary nature of the baseline measure of RZ shocks.<sup>37</sup> In both cases, shocks are normalized to the GDP so that the impulse response functions track the percentage changes in cross-border bank lending when there is a one percent increase of GDP in government spending or tax cut.

Figure A.3 plots the time series of both measures of fiscal shocks as a share of the lagged GDP during our sample period (1990Q1-2012Q4). One should note that expansionary spending shocks are often associated with exogenous increases in tax. Since the size of fiscal multipliers depends on whether government spending is deficit-financed or financed with distortionary taxes (Ramey, 2011), we also estimate the cross-border fiscal-financial spillovers by including both RZ and RR shocks simultaneously as a further robustness check.

***Exogenous fiscal shocks for OECD economies.*** In the extension of our analysis to small open economies, we employ the spending shock data for 16 OECD countries constructed by Auerbach and Gorodnichenko (2012) using OECD’s Outlook and Projections Database (AG shocks, henceforth). Ideally, one would like to use exogenous spending shocks based on a narrative approach—such as the dataset constructed by Guajardo et al. (2014) of 17 OECD countries—to be consistent with the narrative approach used in the U.S. analysis.<sup>38</sup> However, this dataset is only available at an annual frequency, whereas our main focus on financial flows makes it difficult to identify a causal effect using annual data.

Auerbach and Gorodnichenko (2012) conduct a regression analysis for each country, regressing one-period forecast errors for government spending from the OECD projection database on country’s key macroeconomic variables, such as output, government spending, the exchange rate, inflation, investment, and imports. By taking the residuals of this regression, they identify unanticipated fiscal shocks that are orthogonal (exogenous) to the country’s contemporaneous macroeconomic conditions. These residuals are normalized by the nominal GDP of each country. AG shocks are constructed on a

---

<sup>37</sup> While Romer and Romer (2010) considered the effect of exogenous increases in tax, we adjust the sign so that we consider an exogenous tax cut (or an increase in revenue). Thus, we measure the effect of expansionary fiscal shocks in both cases.

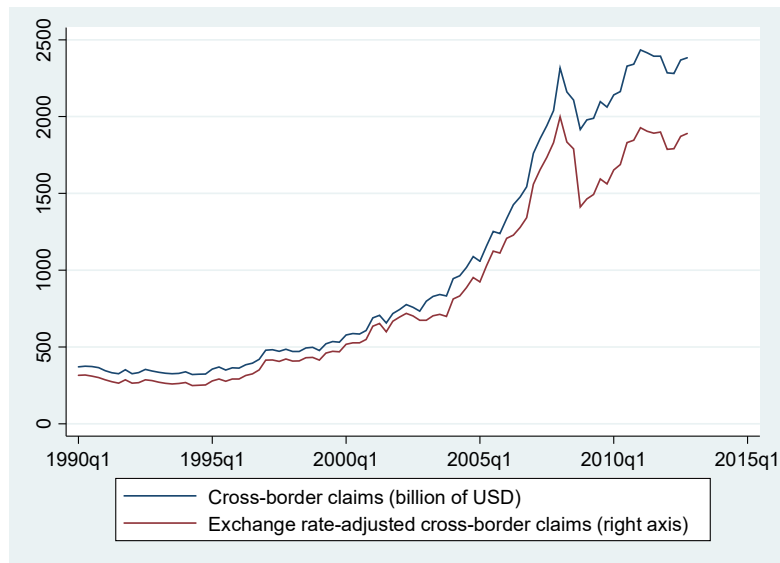
<sup>38</sup> Recently, Miyamoto et al. (2017) also construct a military spending dataset for a large group of countries, similar to the data by Ramey and Zubairy (2018). However, this dataset does not control for anticipated changes explicitly as in Ramey and Zubairy (2018) and is available only at an annual frequency.

semiannual basis since the OECD's forecasts data are available at this frequency and are available from 1985 to 2010.<sup>39</sup>

---

<sup>39</sup> The OECD's forecasts for major macroeconomic variables such as GDP and government spending are prepared twice a year, June and December. Times series of the forecasts consistently start from 1984 for "old" members of the OECD including the United States, and from mid-1990s for relatively new members (e.g., Poland).

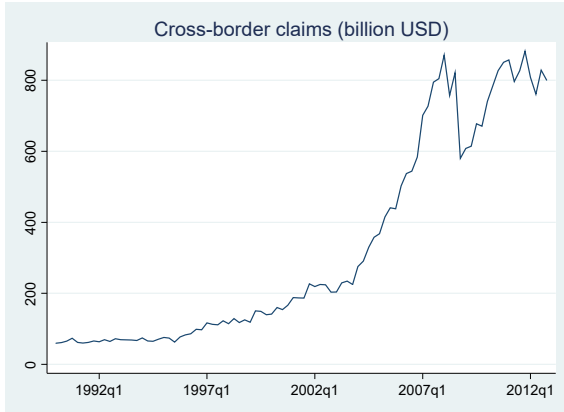
**Figure A.1.** Total U.S. cross-border bank claims: raw stock vs. exchange rate-adjusted stock



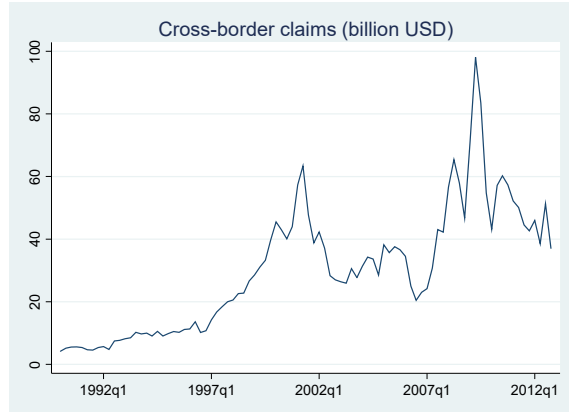
Note: The left panel shows total U.S. cross-border bank claims (exchange rate-unadjusted), and the right panel shows exchange rate-adjusted U.S. cross-border bank claims from 1990Q1 to 2012Q4.

**Figure A.2.** Exchange-rate adjusted U.S. cross-border bank claims to individual countries

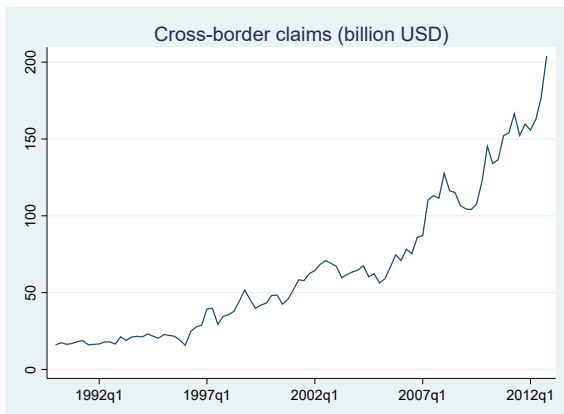
a) country A



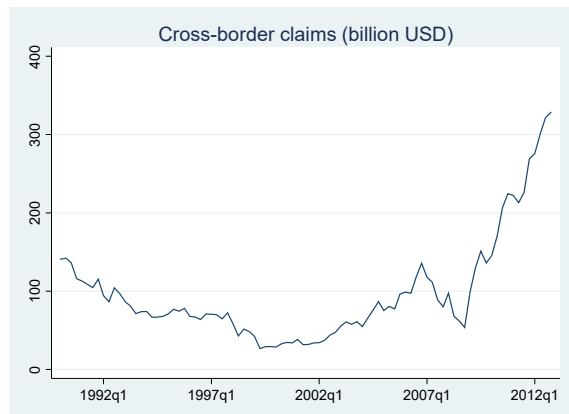
b) country B



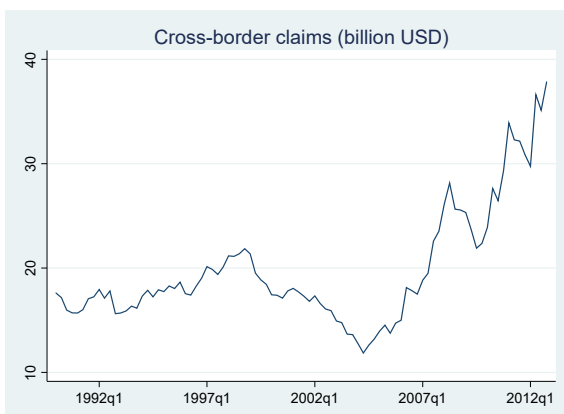
c) country C



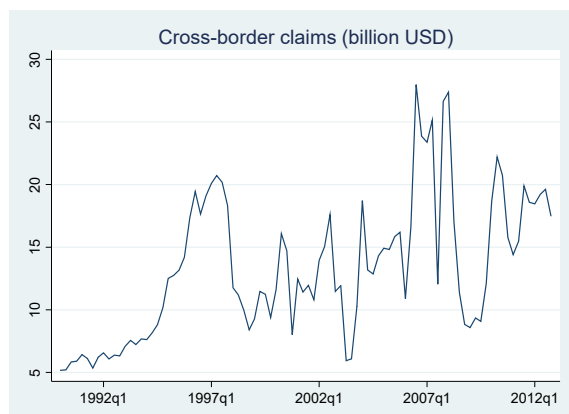
d) country D



e) country E

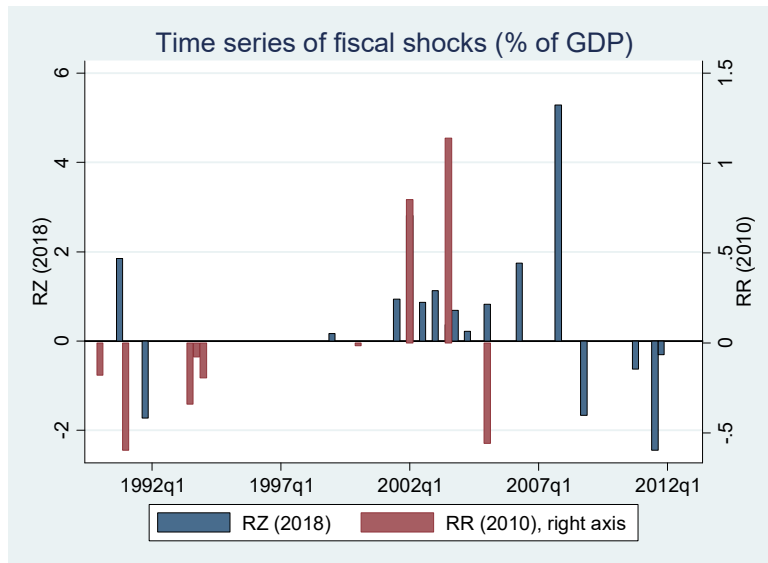


f) country F



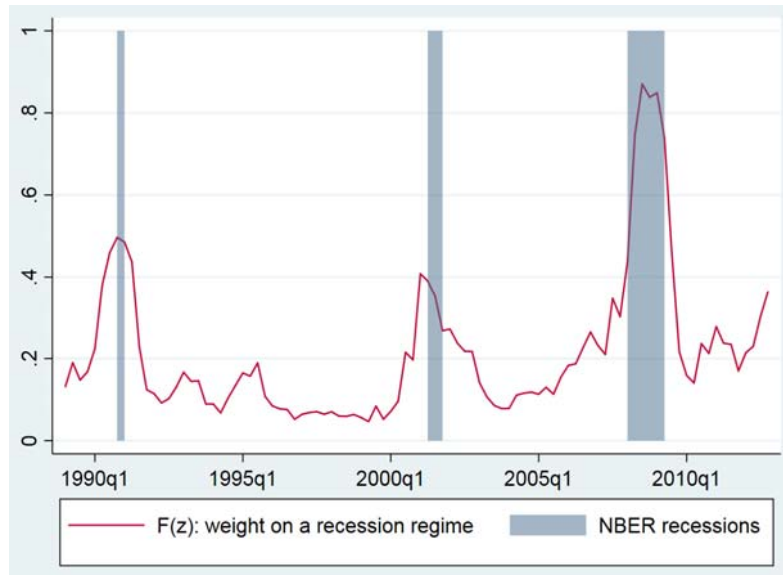
Note: Each graph shows bilateral exchange rate-adjusted cross-border claims between the United States and the corresponding recipient country from 1990Q1 to 2012Q4.

**Figure A.3.** Time series of exogenous fiscal shocks in the United States (% of GDP)



Note: The left axis denotes the time series of exogenous government spending shocks from Ramey and Zubairy (2018), while the right axis denotes the time series of exogenous tax shocks from Romer and Romer (2010). Both measures are in percentage of GDP, and the tax shocks from Romer and Romer (2010) are available until 2007Q4.

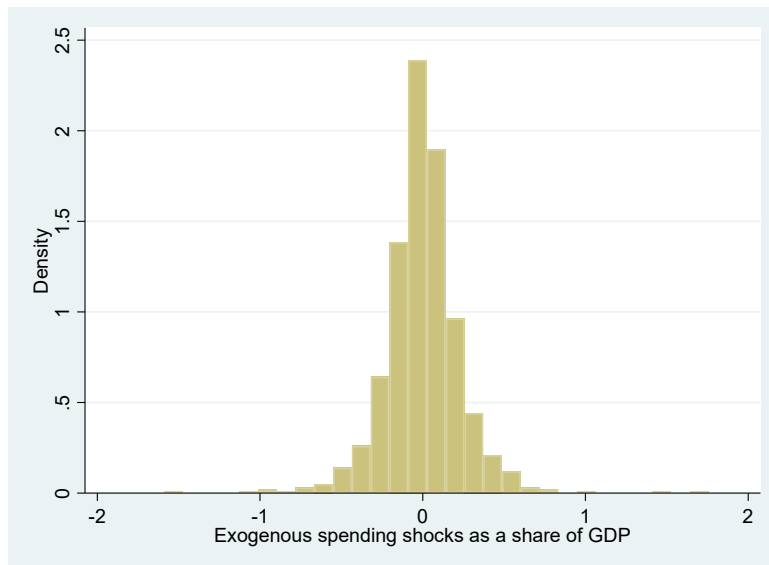
**Figure A.4.** NBER recession dates and the weight on a recession regime



Note: The shaded areas indicate NBER recessions, while the solid red line denotes the weight on a recession regime.



**Figure A.5** Distribution of fiscal policy shock as a share of GDP in 16 OECD countries from 1990 and 2010



Note: The graph shows the distribution of exogenous government spending shocks normalized by the lagged nominal GDP in 16 OECD countries from Auerbach and Gorodnichenko (2012b).

**Table A.1.** Data availability on cross-border flows in the BIS International Banking Statistics

	Nationality of lending bank	Residence of borrowers	Currency composition
Consolidated banking statistics	Yes	Yes	No
Locational banking statistics			
by residence	No	Yes	Yes
by nationality	Yes	No	Yes
stage 1 data	Yes	Yes	Yes

Note: This table is reproduced from Table 1 in Avdjiev and Takáts (2014). In addition to exchange rate fluctuations, the quarterly flows in the locational datasets are corrected for breaks in the reporting population. The BIS consolidated banking statistics group claims according to the nationality of banks (i.e., according to the location of banks' headquarters), netting out inter-office positions. The BIS locational banking statistics define creditors and debtors according to their residence, consistently with national accounts and balance of payments principles. The Stage 1 enhanced data are the first consistent data set to provide all three dimensions at the same time, but the construction of comprehensive time-series data is still in progress.

**Table A.2.** List of countries in the international panel analysis

Source countries	=1 if advanced economy	=1 if open	=1 if peg	Recipient countries	=1 if advanced economy	=1 if open	=1 if peg
Australia	1	0.85	0.00	Argentina	0	0.85	0.00
Austria	1	0.92	1.00	Australia	1	0.85	0.00
Belgium	1	0.90	0.95	Austria	1	0.92	1.00
Canada	1	0.37	0.09	Belgium	1	0.90	0.95
Denmark	1	0.95	0.95	Brazil	0	0.18	0.00
Finland	1	0.92	0.55	Bulgaria	0	0.37	0.50
Germany	1	1.00	0.00	Canada	1	1.00	0.09
Italy	1	0.85	0.64	Chile	0	0.37	0.00
Japan	1	0.99	0.00	China	0	0.12	0.77
Korea	1	0.36	0.14	Colombia	0	0.19	0.00
Mexico	0	0.57	0.09	Czech Republic	1	0.75	0.00
Netherlands	1	1.00	1.00	Denmark	1	0.95	0.95
Portugal	1	0.80	0.59	Estonia	1	0.99	1.00
Spain	1	0.80	0.59	Finland	1	0.92	0.55
Sweden	1	0.89	0.09	France	1	0.85	0.95
United Kingdom	1	1.00	0.00	Germany	1	1.00	0.00
United States	1	1.00	0.00	Greece	1	0.61	0.45
				Hungary	0	0.45	0.00
				India	0	0.17	0.09
				Indonesia	0	0.84	0.09
				Israel	1	0.52	0.00
				Italy	1	0.85	0.64
				Japan	1	0.99	0.00
				Korea	1	0.36	0.14
				Latvia	0	0.96	0.19
				Lithuania	0	0.99	0.82
				Malaysia	0	0.66	0.45
				Mexico	0	0.57	0.09
				Netherlands	1	1.00	1.00
				New Zealand	1	1.00	0.00
				Norway	1	0.79	0.09
				Pakistan	0	0.16	0.23
				Peru	0	0.73	0.00
				Philippines	0	0.40	0.09
				Poland	0	0.22	0.00
				Portugal	1	0.80	0.59
				Romania	0	0.31	0.00
				Russia	0	0.33	0.00
				Slovak Republic	1	0.34	0.00
				Slovenia	1	0.68	0.29
				South Africa	0	0.15	0.00
				Spain	1	0.80	0.59
				Sweden	1	0.89	0.09
				Thailand	0	0.40	0.41
				Turkey	0	0.26	0.00
				Ukraine	0	0.15	0.38
				United Kingdom	1	1.00	0.00
				United States	1	1.00	0.00
				Venezuela	0	0.43	0.32

Note: We compute the time-series average of the status regarding capital openness and exchange rate regime.

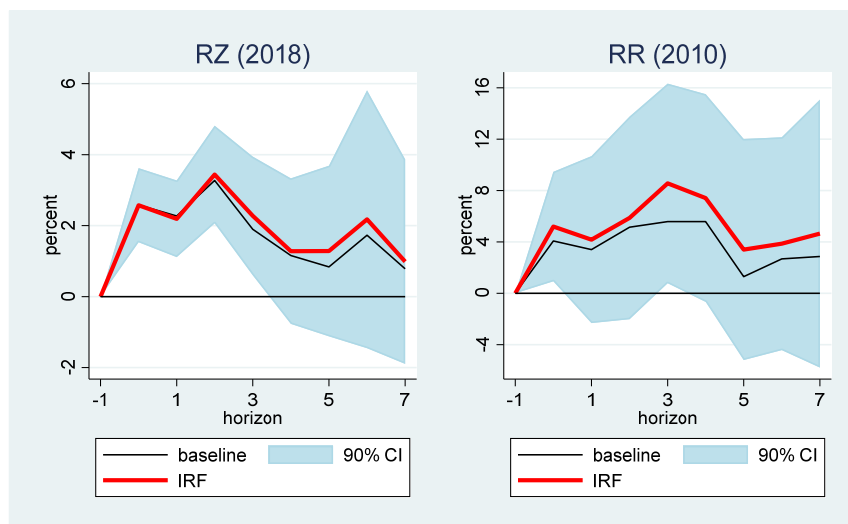
**Table A.3.** Total cross-border claims and liabilities as a share of GDP

	Total cross-border claims as a share of GDP	Total cross-border liabilities as a share of GDP
Australia	65.20	165.13
Austria	382.88	227.47
Belgium	571.81	441.18
Canada	88.99	66.26
Denmark	197.52	229.40
Finland	502.87	595.53
Germany	289.92	130.79
Italy	101.95	127.21
Japan	162.92	72.29
Korea	31.03	71.46
Mexico	5.44	7.32
Netherlands	524.19	469.70
Portugal	224.71	184.77
Spain	135.20	171.35
Sweden	278.91	169.49
United Kingdom	643.95	379.29
United States	63.55	49.65

Note: Total cross-border claims and liabilities as a share of the domestic GDP in 2010Q4 under locational banking statistics with the residency principle.

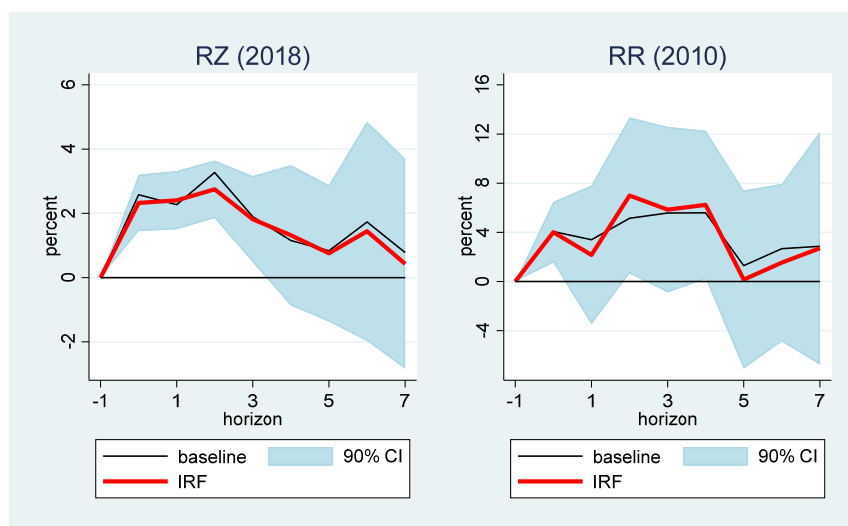
## Appendix B. Robustness checks and additional exercises

**Figure B.1.** Estimated effect of a U.S. expansionary fiscal policy shock (1 percent of GDP) on cross-border bank lending: controlling for other U.S. macroeconomic variables



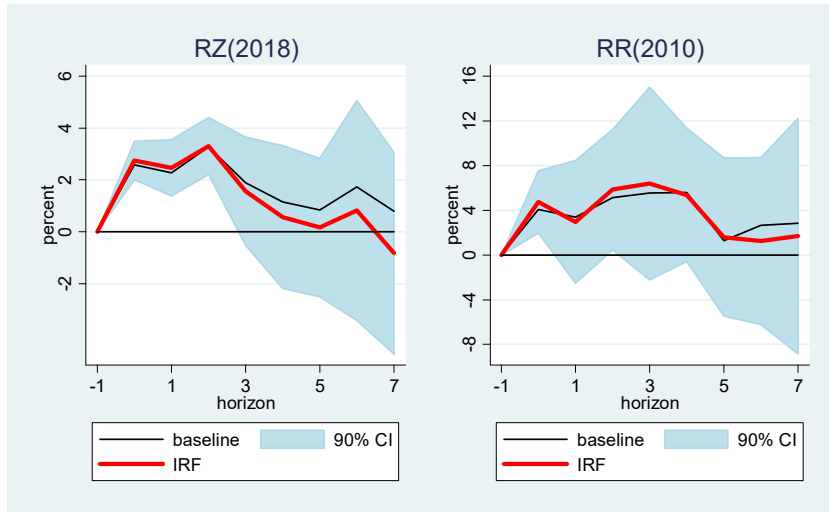
Note: The left panel shows the response of cross-border bank lending to a U.S. expansionary fiscal policy shock (1 percent of GDP) using exogenous government spending shocks from Ramey and Zubairy (2018), while the right panel shows the response to exogenous tax shocks from Romer and Romer (2010). Horizon  $h=0$  captures the impact of the shock, and the units are in percentage.

**Figure B.2.** Estimated effect of a U.S. expansionary fiscal policy shock (1 percent of GDP) on cross-border bank lending: controlling for local pull factors



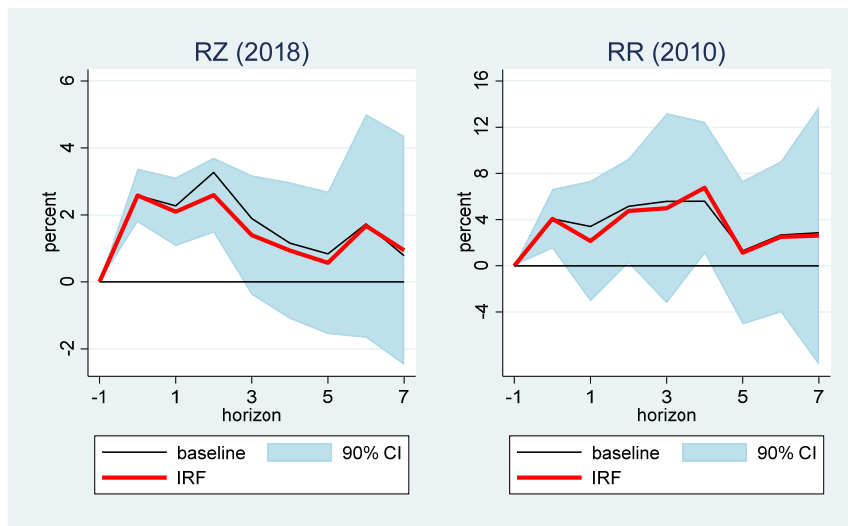
Note: The left panel shows the response of cross-border bank lending to a U.S. expansionary fiscal policy shock (1 percent of GDP) using exogenous government spending shocks from Ramey and Zubairy (2018), while the right panel shows the response to exogenous tax shocks from Romer and Romer (2010). Horizon  $h=0$  captures the impact of the shock, and the units are in percentage.

**Figure B.3.** Estimated effect of a U.S. expansionary fiscal policy shock (1 percent of GDP) on cross-border bank lending: using eight lags instead



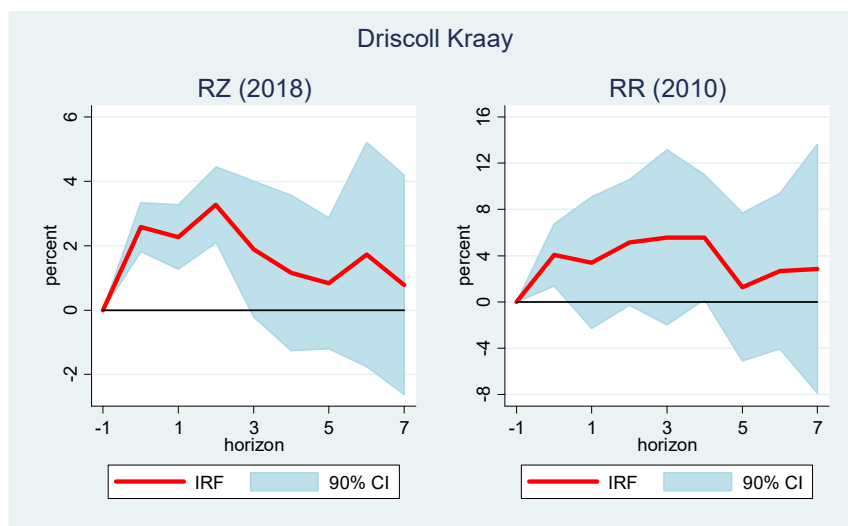
Note: The left panel shows the response of cross-border bank lending to a U.S. expansionary fiscal policy shock (1 percent of GDP) using exogenous government spending shocks from Ramey and Zubairy (2018), while the right panel shows the response to exogenous tax shocks from Romer and Romer (2010). Horizon  $h=0$  captures the impact of the shock, and the units are in percentage. Eight lags of dependent and control variables are used in the estimation.

**Figure B.4.** Estimated effect of a U.S. expansionary fiscal policy shock (1 percent of GDP) on cross-border bank lending: estimating in level



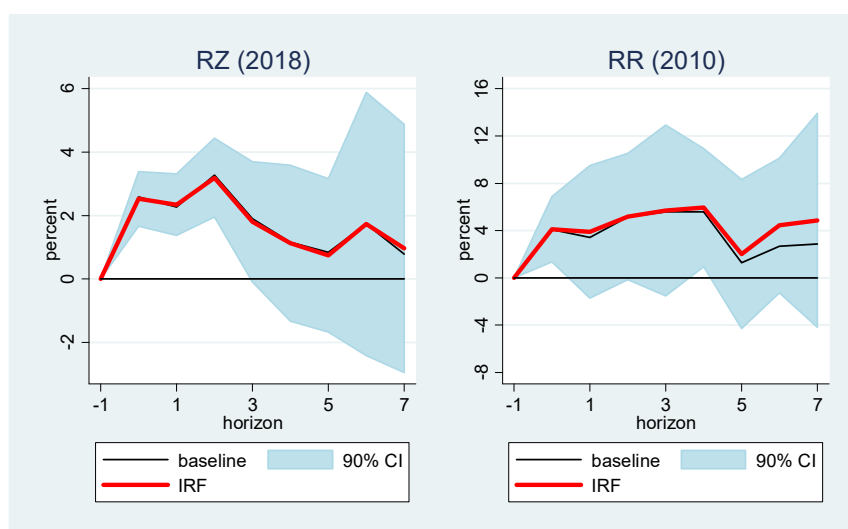
Note: The left panel shows the response of cross-border bank lending to a U.S. expansionary fiscal policy shock (1 percent of GDP) using exogenous government spending shocks from Ramey and Zubairy (2018), while the right panel shows the response to exogenous tax shocks from Romer and Romer (2010). Horizon  $h=0$  captures the impact of the shock, and the units are in percentage. Eight lags of dependent and control variables are used in the estimation.

**Figure B.5.** Estimated effect of a U.S. expansionary fiscal policy shock (1 percent of GDP) on cross-border bank lending: using Driscoll-Kraay standard error



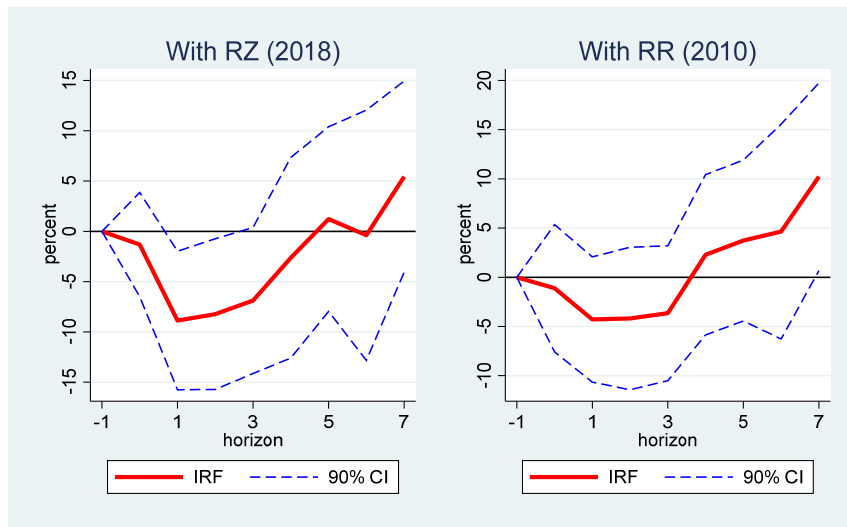
Note: The left panel shows the response of cross-border bank lending to a U.S. expansionary fiscal policy shock (1 percent of GDP) using exogenous government spending shocks from Ramey and Zubairy (2018), while the right panel shows the response to exogenous tax shocks from Romer and Romer (2010). Horizon  $h=0$  captures the impact of the shock, and the units are in percentage. Driscoll-Kraay standard errors are used to construct confidence intervals.

**Figure B.6.** Estimated effect of a U.S. expansionary fiscal policy shock (1 percent of GDP) on cross-border bank lending: controlling for bilateral imports



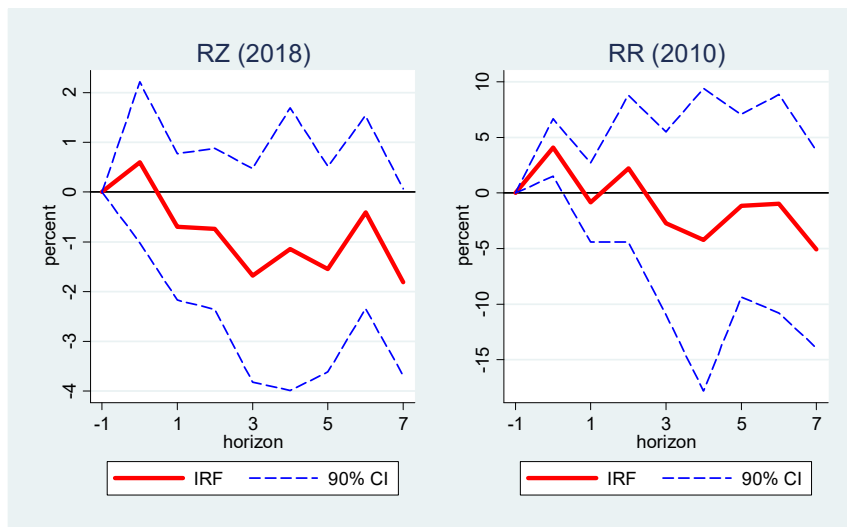
Note: The left panel shows the response of cross-border bank lending to a U.S. expansionary fiscal policy shock (1 percent of GDP) using exogenous government spending shocks from Ramey and Zubairy (2018), while the right panel shows the response to exogenous tax shocks from Romer and Romer (2010). Horizon  $h=0$  captures the impact of the shock, and the units are in percentage.

**Figure B.7.** Estimated effect of a U.S. monetary policy shock on cross-border bank lending



Note: The both panels show the response of cross-border bank lending to a U.S. monetary policy shock constructed by Coibion (2012), who extends the narrative approach by Romer and Romer (2004) when estimated together with RZ's spending shocks (left) and RR's revenue shocks (right). Horizon  $h=0$  captures the impact of the shock, and the units are in percentage.

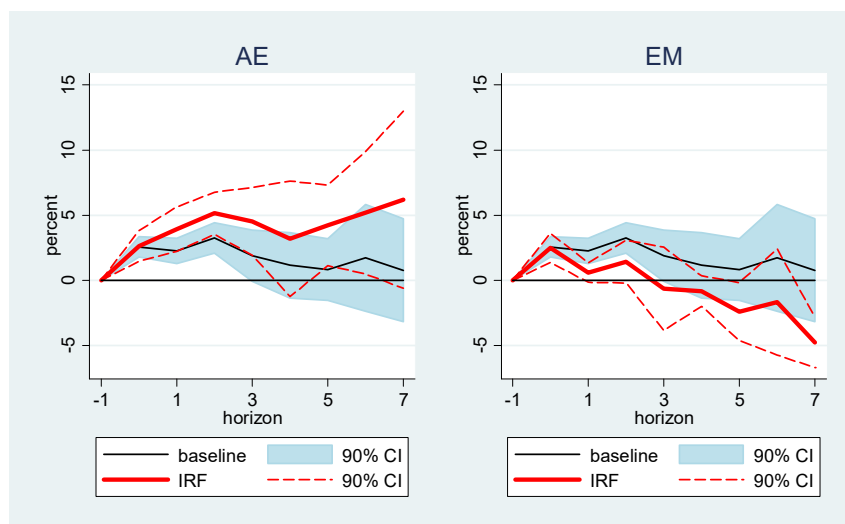
**Figure B.8.** Estimated effect of a U.S. expansionary fiscal policy shock (1 percent of GDP) on cross-border bank borrowing



Note: The left panel shows the response of cross-border bank borrowing to a U.S. expansionary fiscal policy shock (1 percent of GDP) using exogenous government spending shocks from Ramey and Zubairy (2018), while the right panel shows the response to exogenous tax shocks from Romer and Romer (2010). Horizon  $h=0$  captures the impact of the shock, and the units are in percentage.

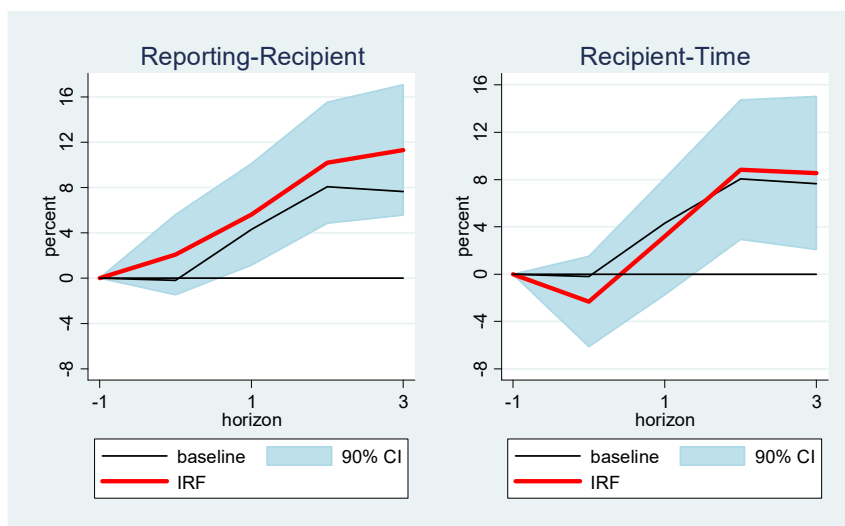


**Figure B.9.** Estimated effect of a U.S. expansionary fiscal policy shock (1 percent of GDP) on cross-border bank lending: advanced vs. emerging market recipient countries



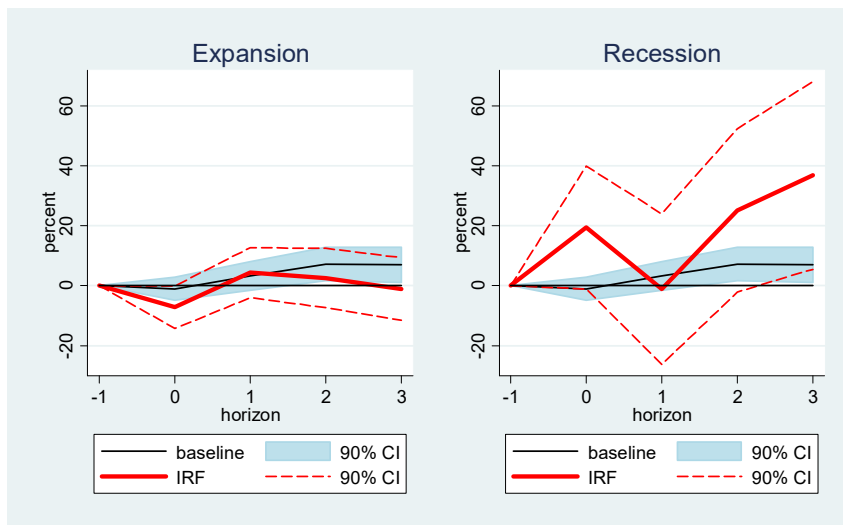
Note: The left (right) panel shows the response of cross-border bank lending to exogenous government spending shocks from Ramey and Zubairy (2018) when the recipient country is an advanced (emerging market) economy. Horizon  $h=0$  captures the impact of the shock, and the units are in percentage.

**Figure B.10.** Estimated effect of expansionary spending shock (1 percent of GDP) on cross-border bank lending using 16 OECD countries: alternative fixed effects



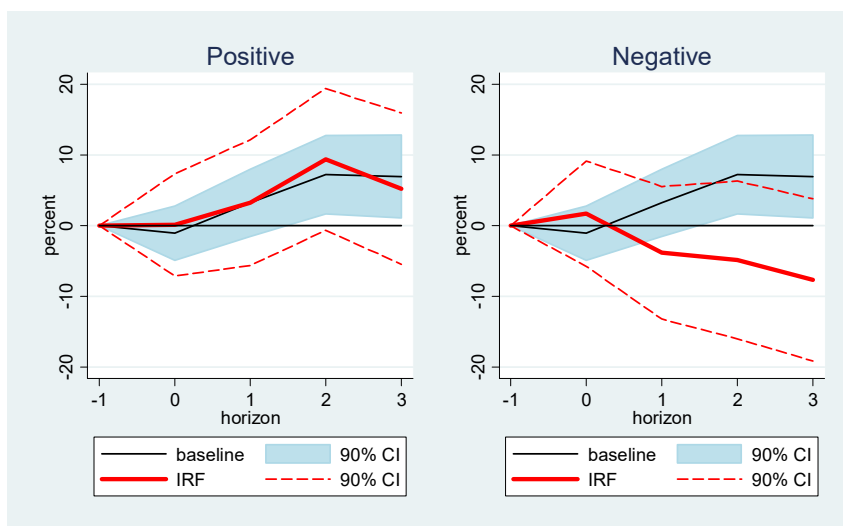
Note: The graph shows the response of cross-border bank lending to exogenous government spending shocks from Auerbach and Gorodnichenko (2012b). Horizon  $h=0$  captures the impact of the shock, and the units are in percentage.

**Figure B.11.** Estimated effect of expansionary fiscal policy shock (1 percent of GDP) on cross-border bank lending using 16 OECD countries: expansions vs. recessions



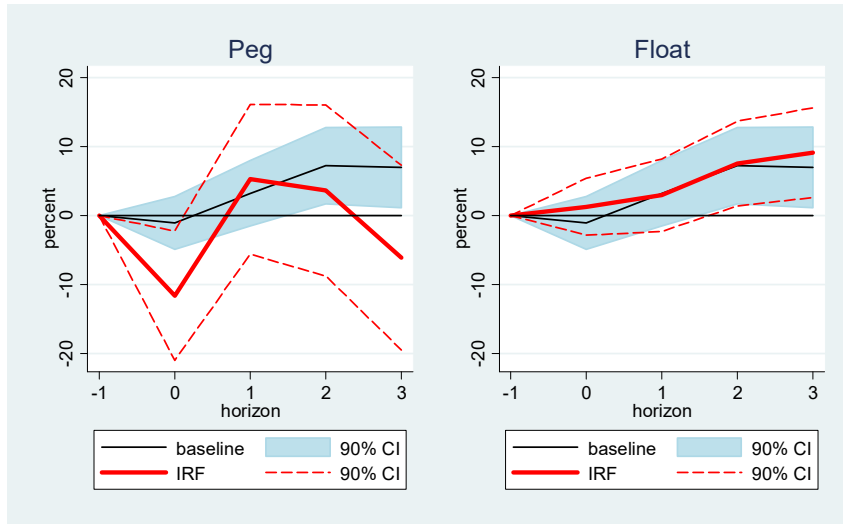
Note: The left (right) panel shows the response of cross-border bank lending to exogenous government spending shocks from Auerbach and Gorodnichenko (2012b) during expansions (recessions). Horizon  $h=0$  captures the impact of the shock, and the units are in percentage.

**Figure B.12.** Estimated effect of expansionary fiscal policy shock (1 percent of GDP) on cross-border bank lending using 16 OECD countries: expansionary vs. contractionary shocks



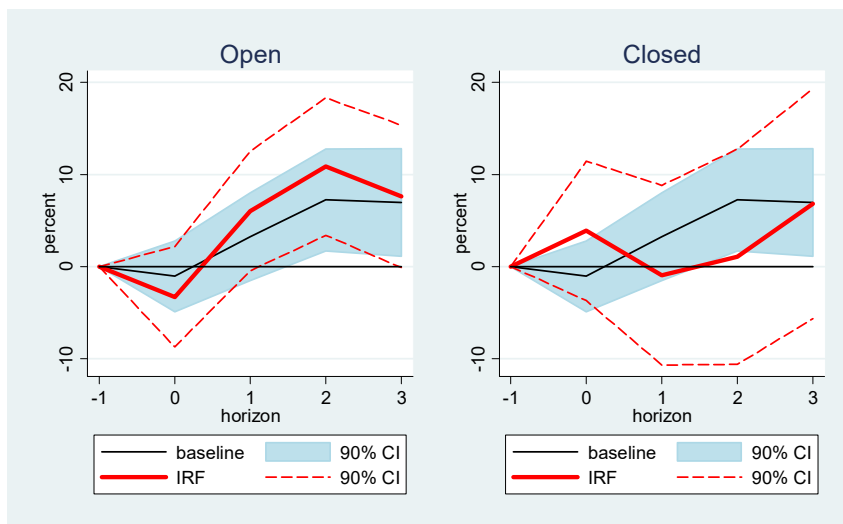
Note: The left (right) panel shows the response of cross-border bank lending to expansionary (contractionary) exogenous government spending shocks from Auerbach and Gorodnichenko (2012b). Horizon  $h=0$  captures the impact of the shock, and the units are in percentage. The sign of the response to contractionary shocks is adjusted so that the response is negative in this case.

**Figure B.13.** Estimated effect of expansionary fiscal policy shock (1 percent of GDP) on cross-border bank lending using 16 OECD countries: pegged vs. non-pegged



Note: The left (right) panel shows the response of cross-border bank lending to exogenous government spending shocks from Auerbach and Gorodnichenko (2012b) when the recipient country is pegged (non-pegged). Horizon  $h=0$  captures the impact of the shock, and the units are in percentage.

**Figure B.14.** Estimated effect of expansionary fiscal policy shock (1 percent of GDP) on cross-border bank lending using 16 OECD countries: open vs. closed recipient countries



Note: The left (right) panel shows the response of cross-border bank lending to exogenous government spending shocks from Auerbach and Gorodnichenko (2012b) when the recipient country is financially open (closed). Horizon  $h=0$  captures the impact of the shock, and the units are in percentage.

## References

Avdjiev, Stefan, and Elod Takáts. "Cross-border bank lending during the taper tantrum: the role of emerging market fundamentals." *BIS Quarterly Review* (2014).

Forni, Mario, and Luca Gambetti. "Government spending shocks in open economy VARs." *Journal of International Economics* 99 (2016): 68-84.

Guajardo, Jaime, Daniel Leigh, and Andrea Pescatori. "Expansionary austerity? International evidence." *Journal of the European Economic Association* 12.4 (2014): 949-968.

Leeper, Eric M., Todd B. Walker, and Shu-Chun Susan Yang. "Fiscal foresight and information flows." *Econometrica* 81.3 (2013): 1115-1145.